



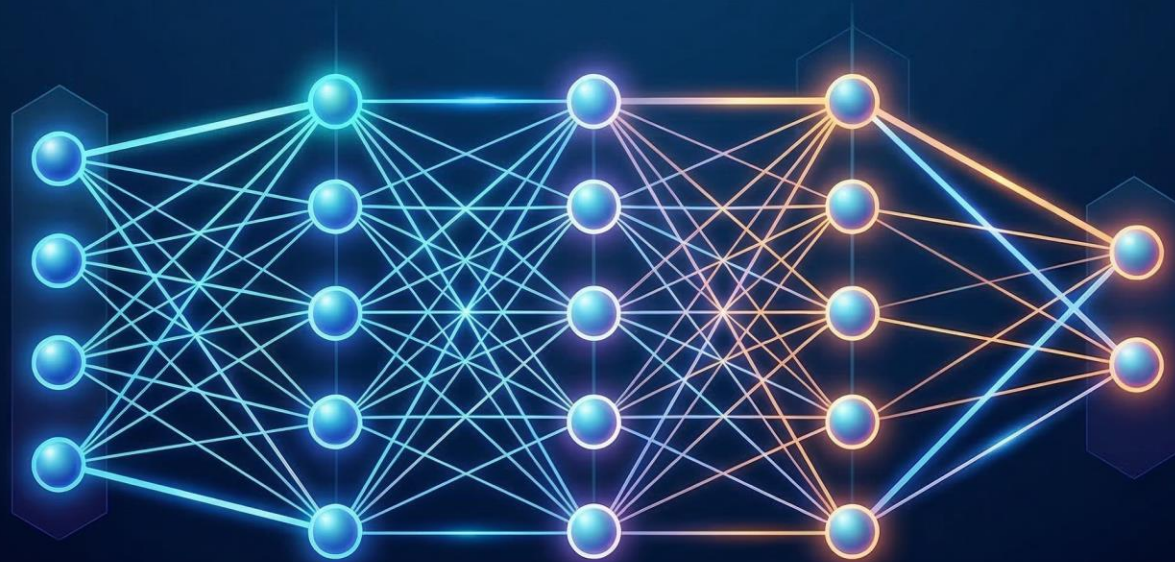
DUBBLETT

Ai som motor för Nästa generations marktäckesdata

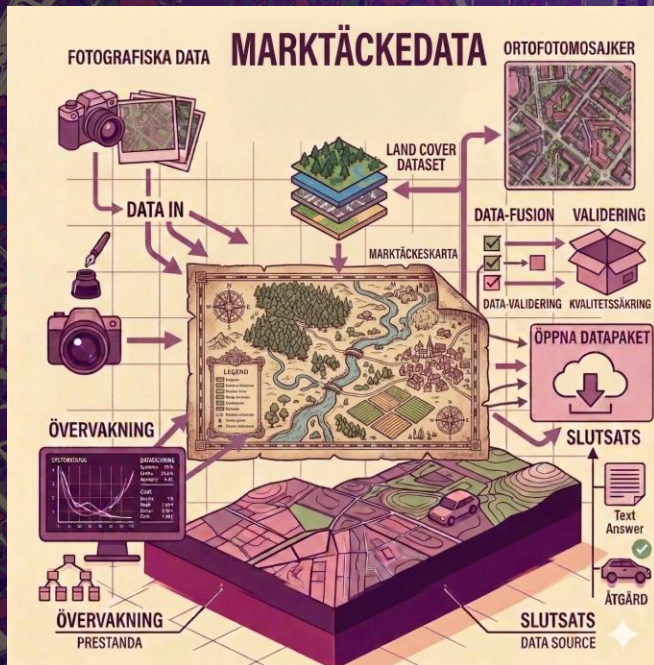


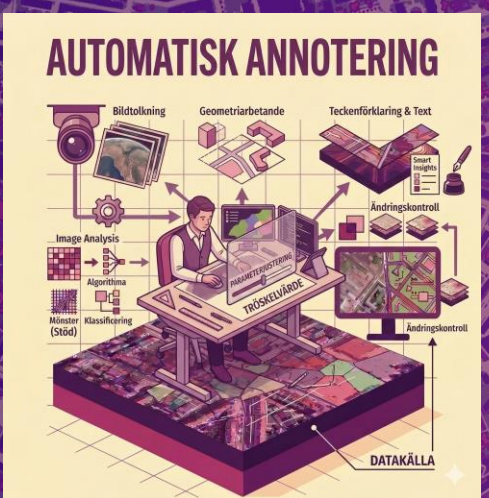
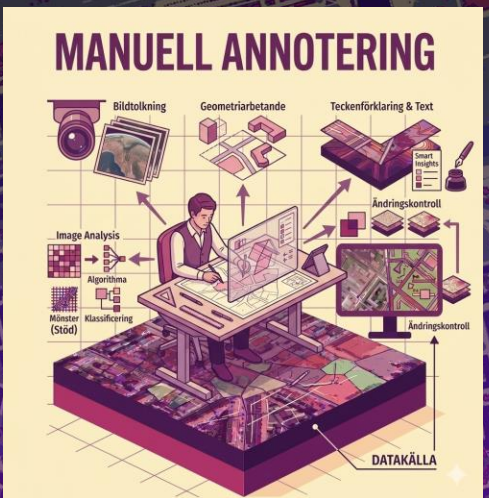
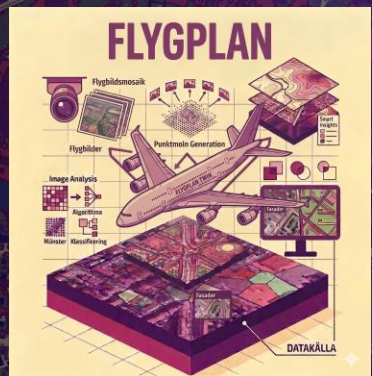
Hassan Mustafa
AI-Engineer

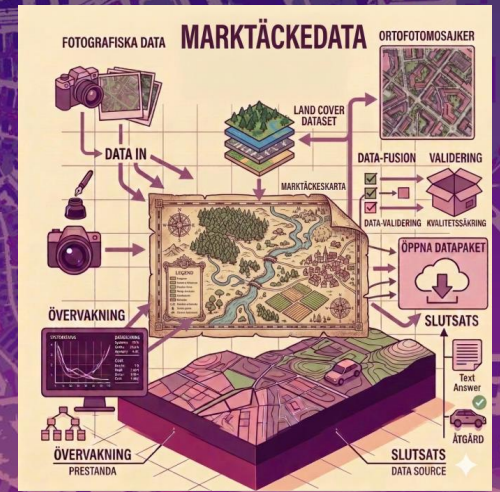
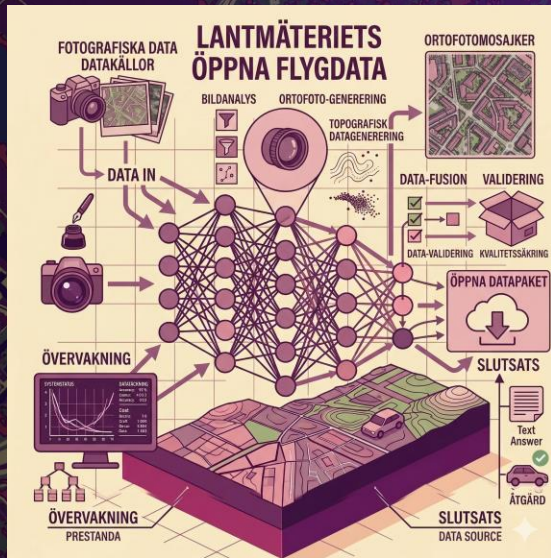
NEURAL NETWORKS



What is not measured can not be improved



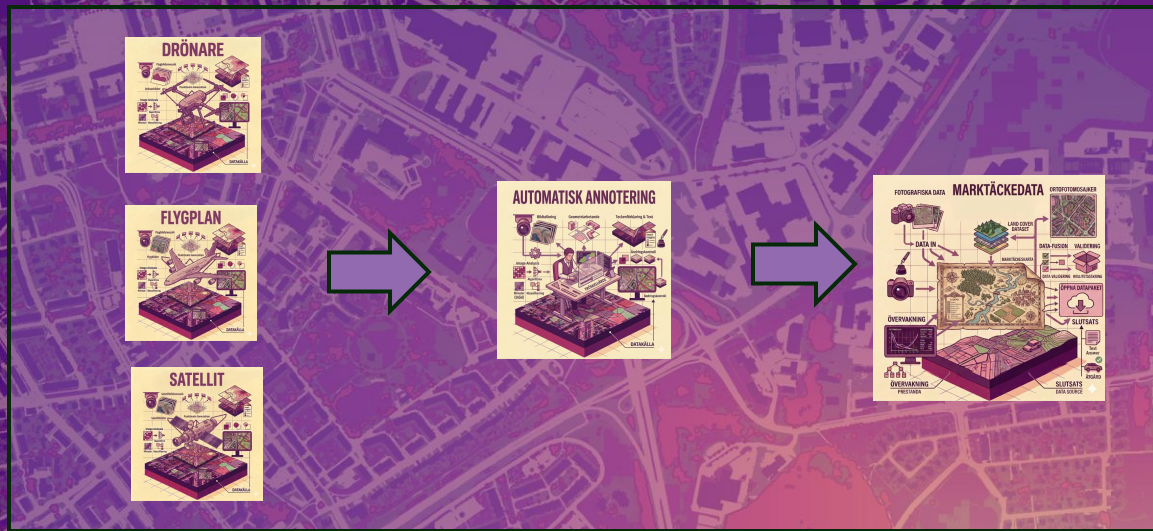
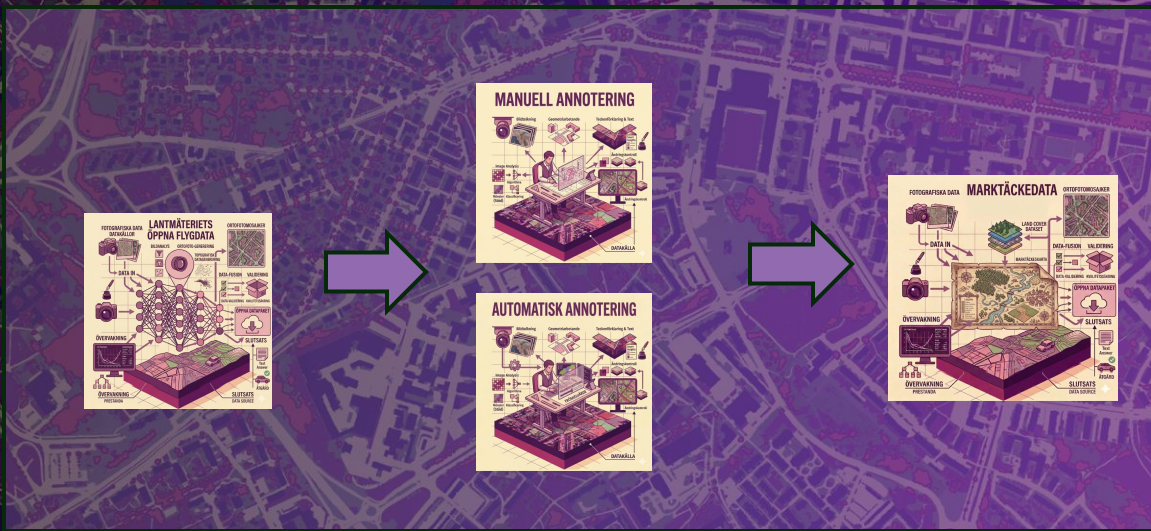
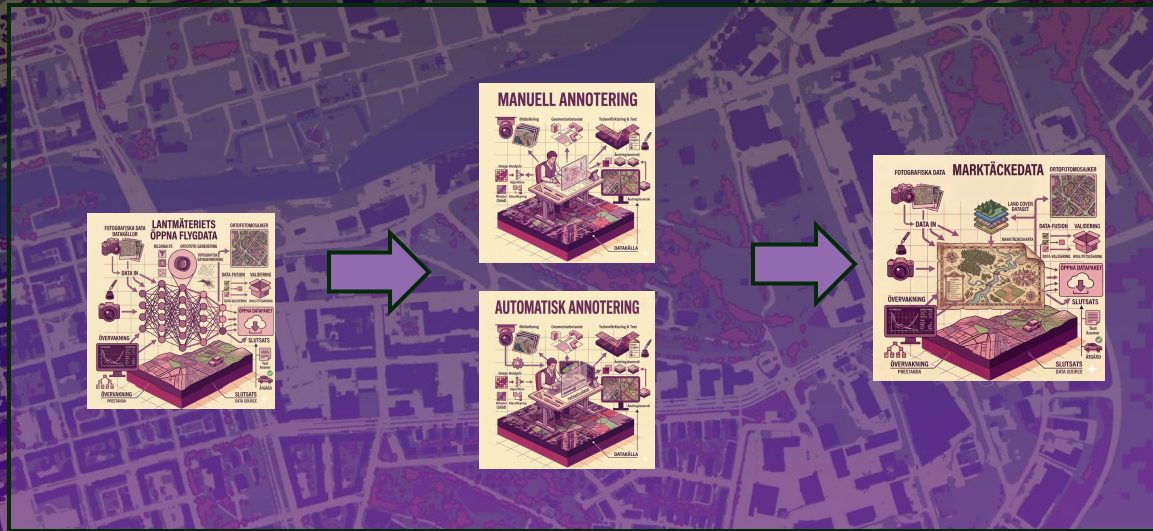
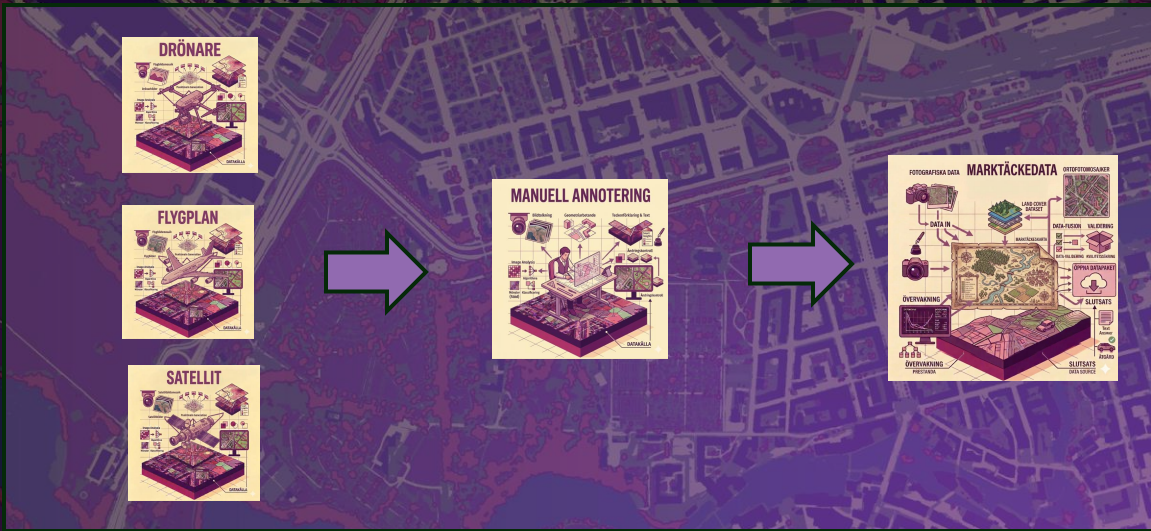


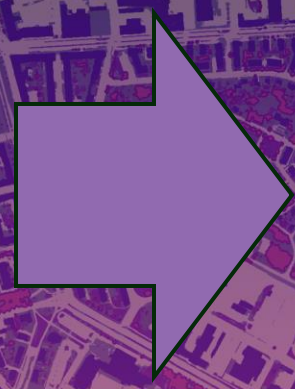
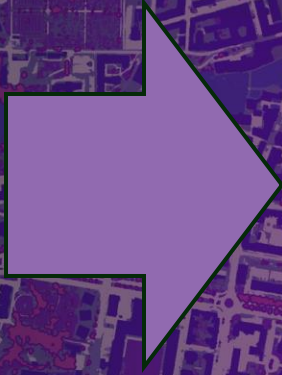
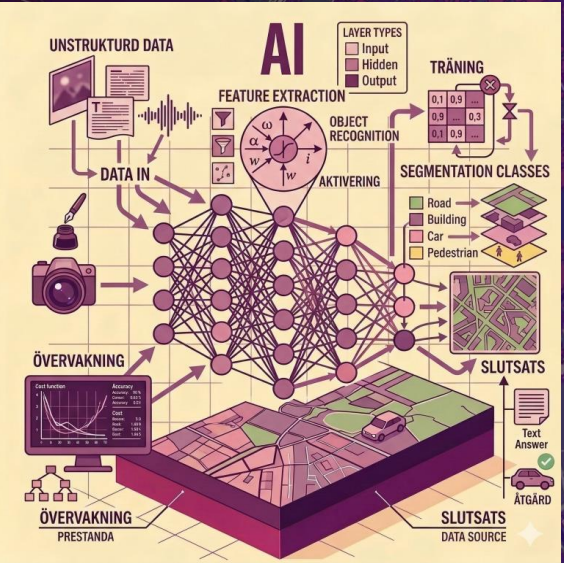




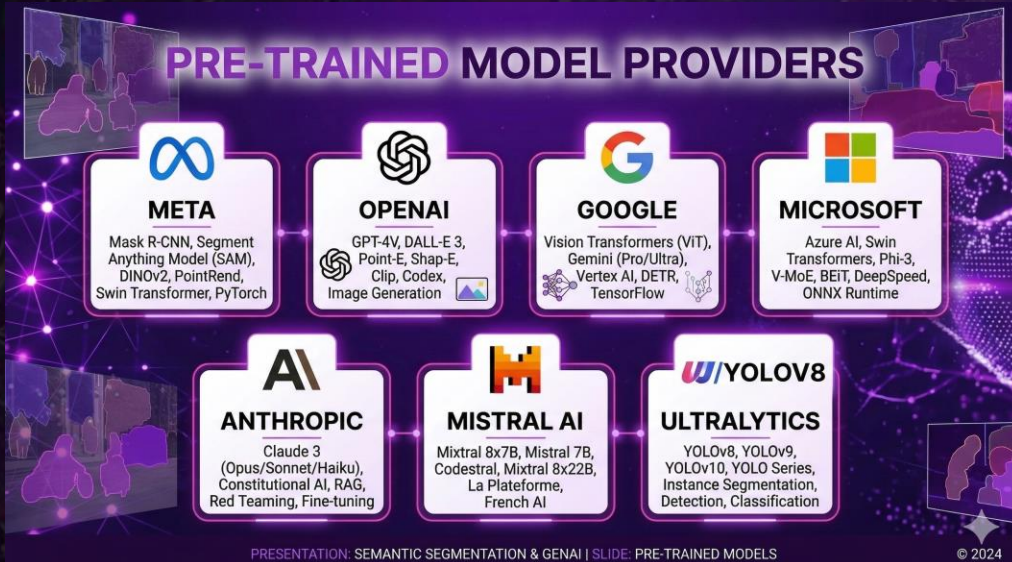
Snabbhet

Korrekthet

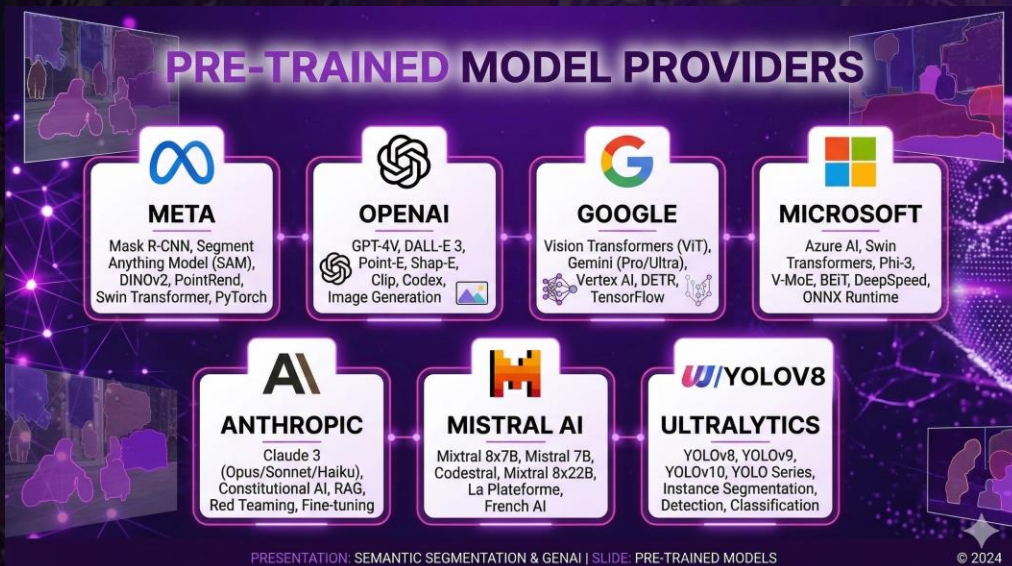




The GenAI Divide – State of ai in business 2025

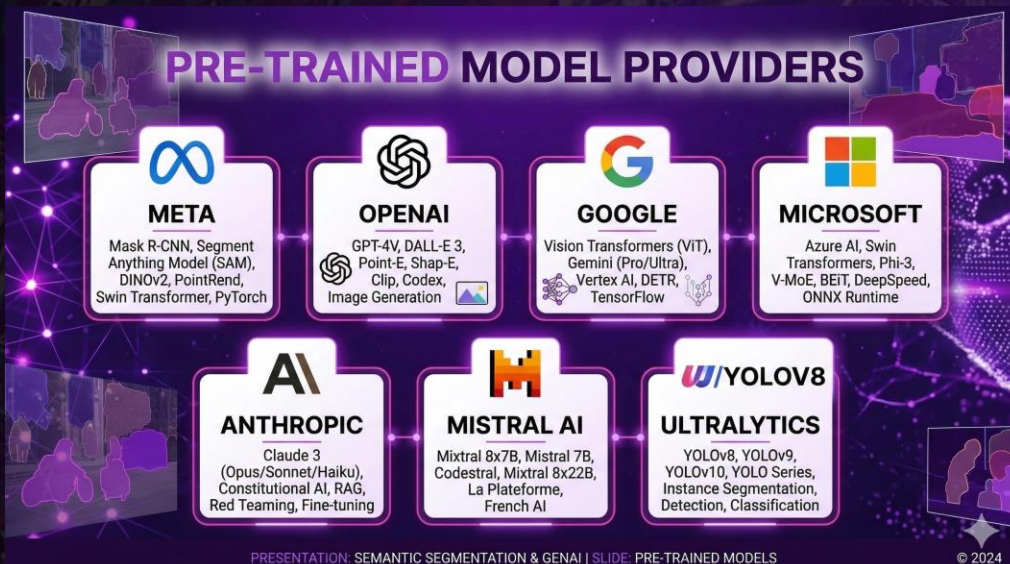


The GenAI Divide – State of ai in business 2025



- Despite \$30–40 billion in enterprise investment into GenAI, this report uncovers a surprising result in that 95% of organizations are getting zero return.

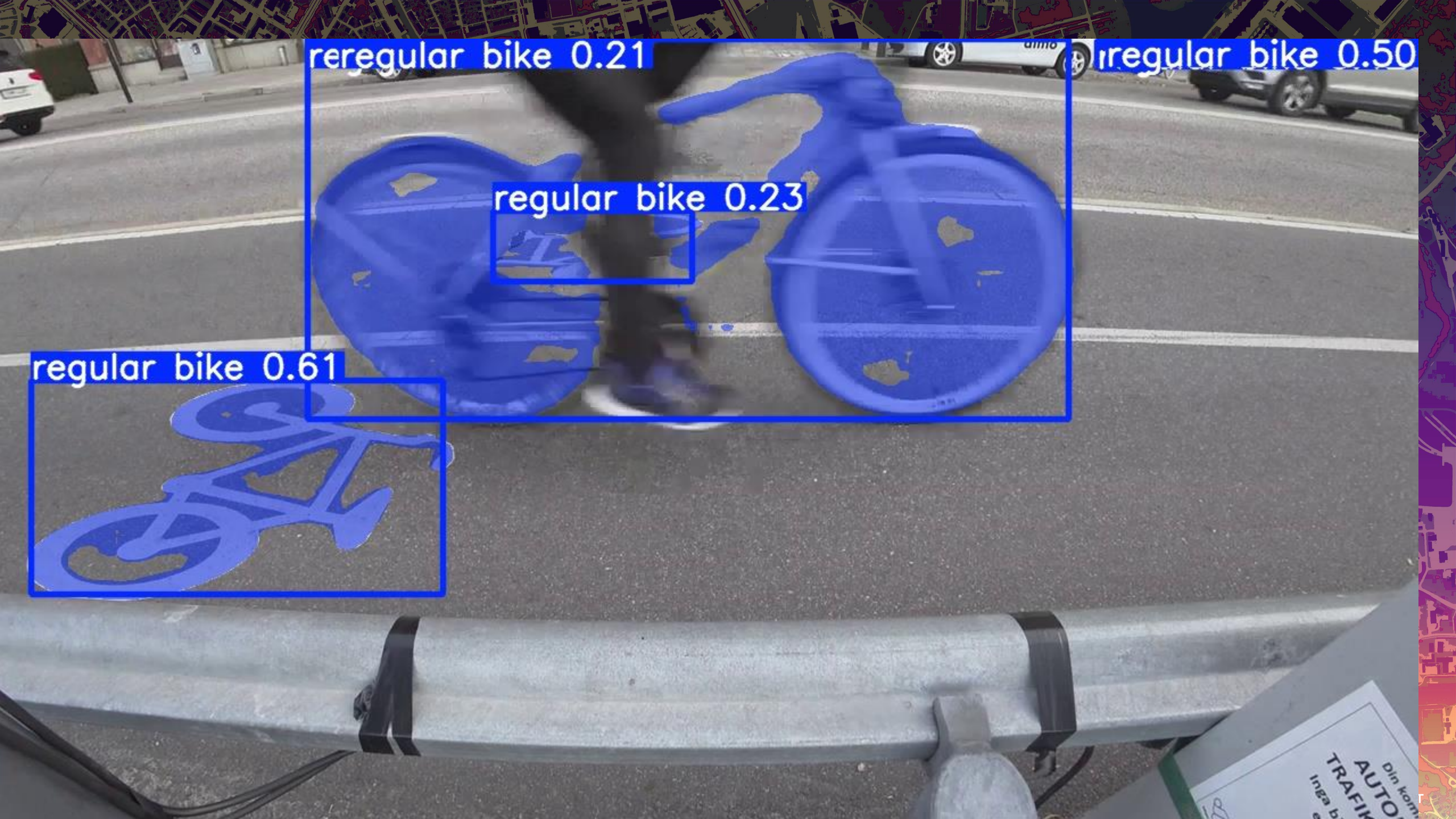
The GenAI Divide – State of ai in business 2025



- Despite \$30–40 billion in enterprise investment into GenAI, this report uncovers a surprising result in that 95% of organizations are getting zero return.
- Most AI tools don't learn and don't integrate well into workflows.



Din kommun
AUTOMATISKA
TRAFIKKRÄN
Inga bilder
eller la



reregular bike 0.21

regular bike 0.50

regular bike 0.23

regular bike 0.61

Din kom
AUTO
TRAFIK
Inga bi
e



car 0.20

car 0.42

car 0.35

car 0.39

car 0.24

car 0.26

car 0.43

car 0.23

car 0.79

car 0.27

car 0.30

0.72

car 0.62

car 0.60

car 0.68

car 0.68

car 0.58

car 0.31

car 0.40

car 0.35

car 0.29

car 0.27

car 0.22

car 0.32

car 0.57

car 0.38

car 0.47

car 0.49

car 0.27

car 0.27

car 0.25

car 0.30

car 0.31

car 0.21

car 0.60

car 0.28

car 0.33

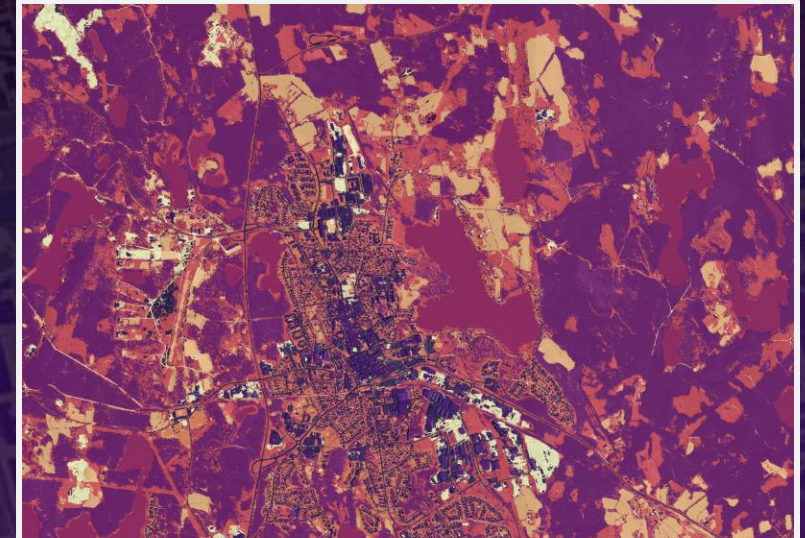
car 0.67

car 0.57

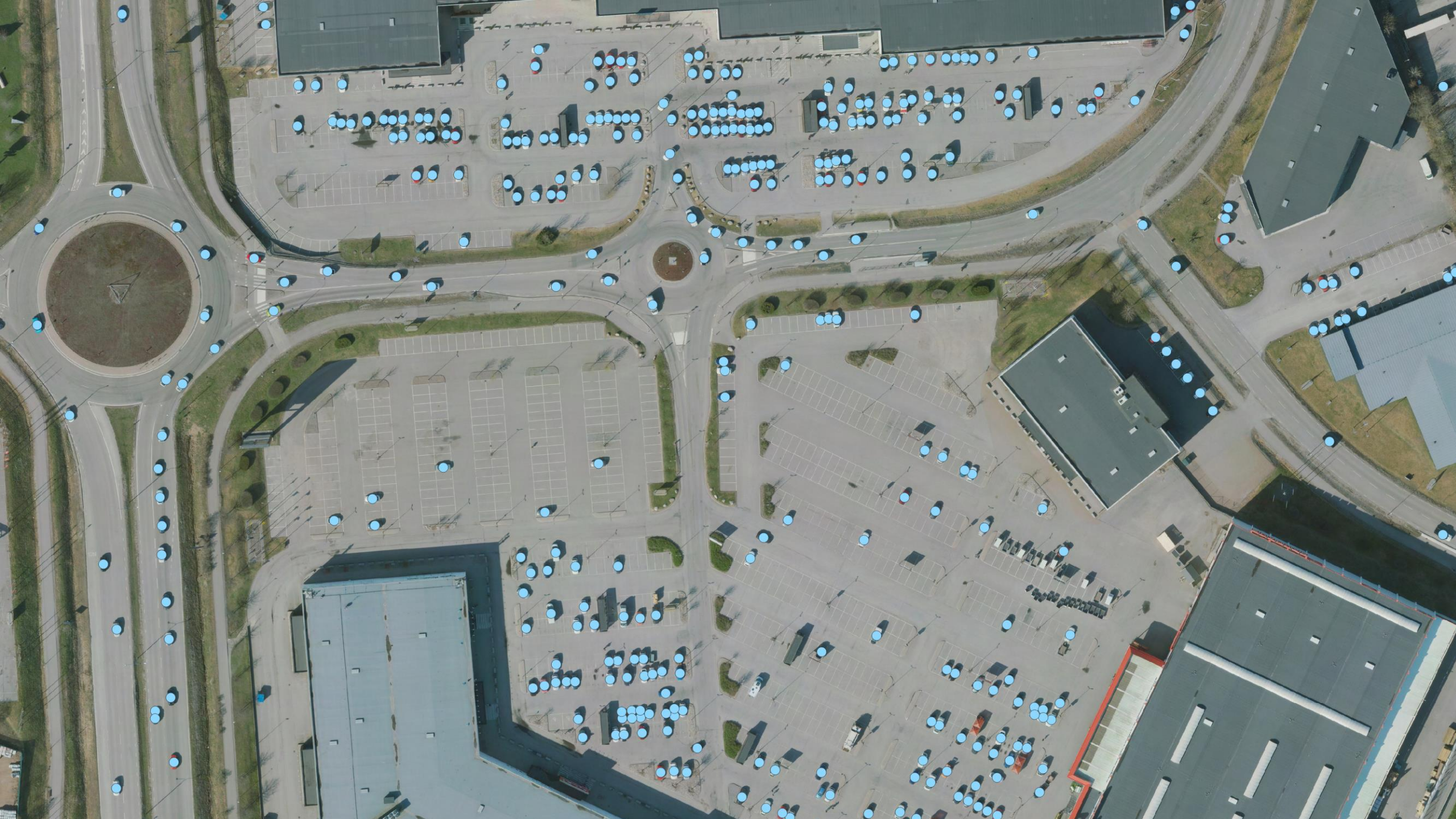
car 0.50

Problemspecifika modeller

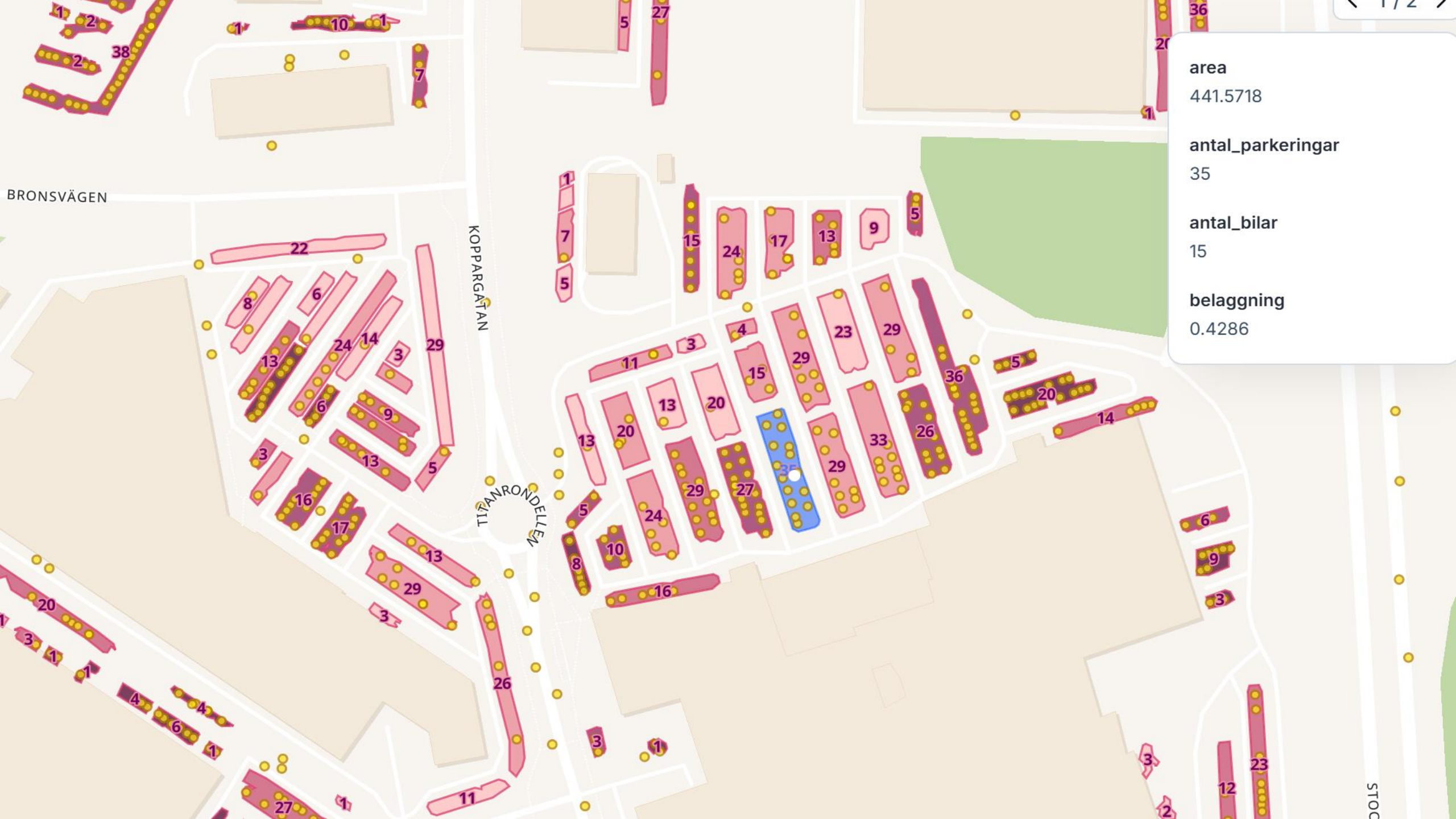
Dubblett utvecklar problemspecifika modeller som klassar, detekterar och ser de klasser som är intressanta för just dig. De är tränade för din specifika geografiska plats och kan hjälpa dig att analysera frågor bortom de klassiska problemformuleringarna.











area
441.5718

antal_parkeringar
35

antal_bilar
15

belaggnig
0.4286

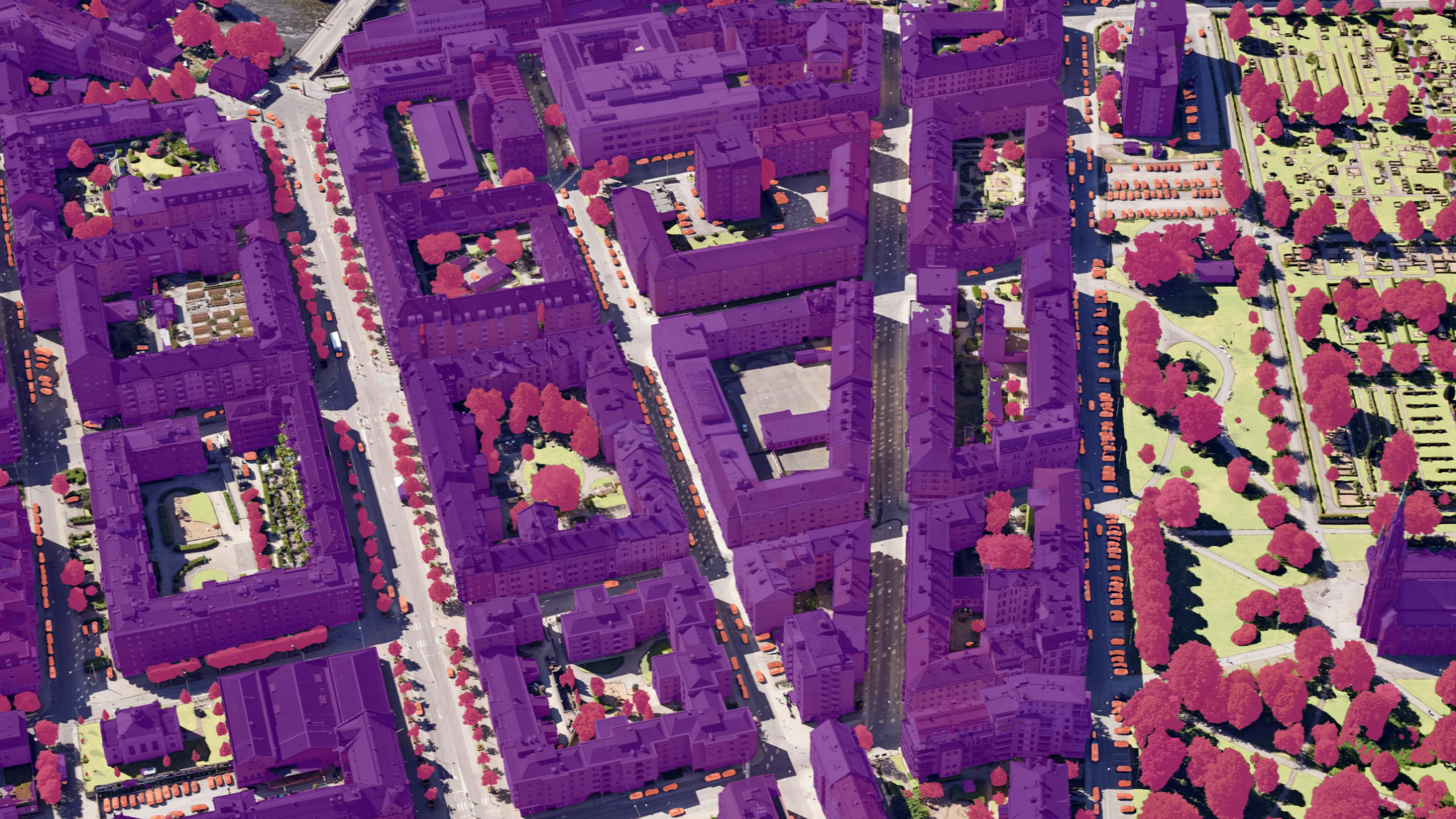
BRONSVÄGEN

KOPPARGÅTAN

TITANRONDLELEN

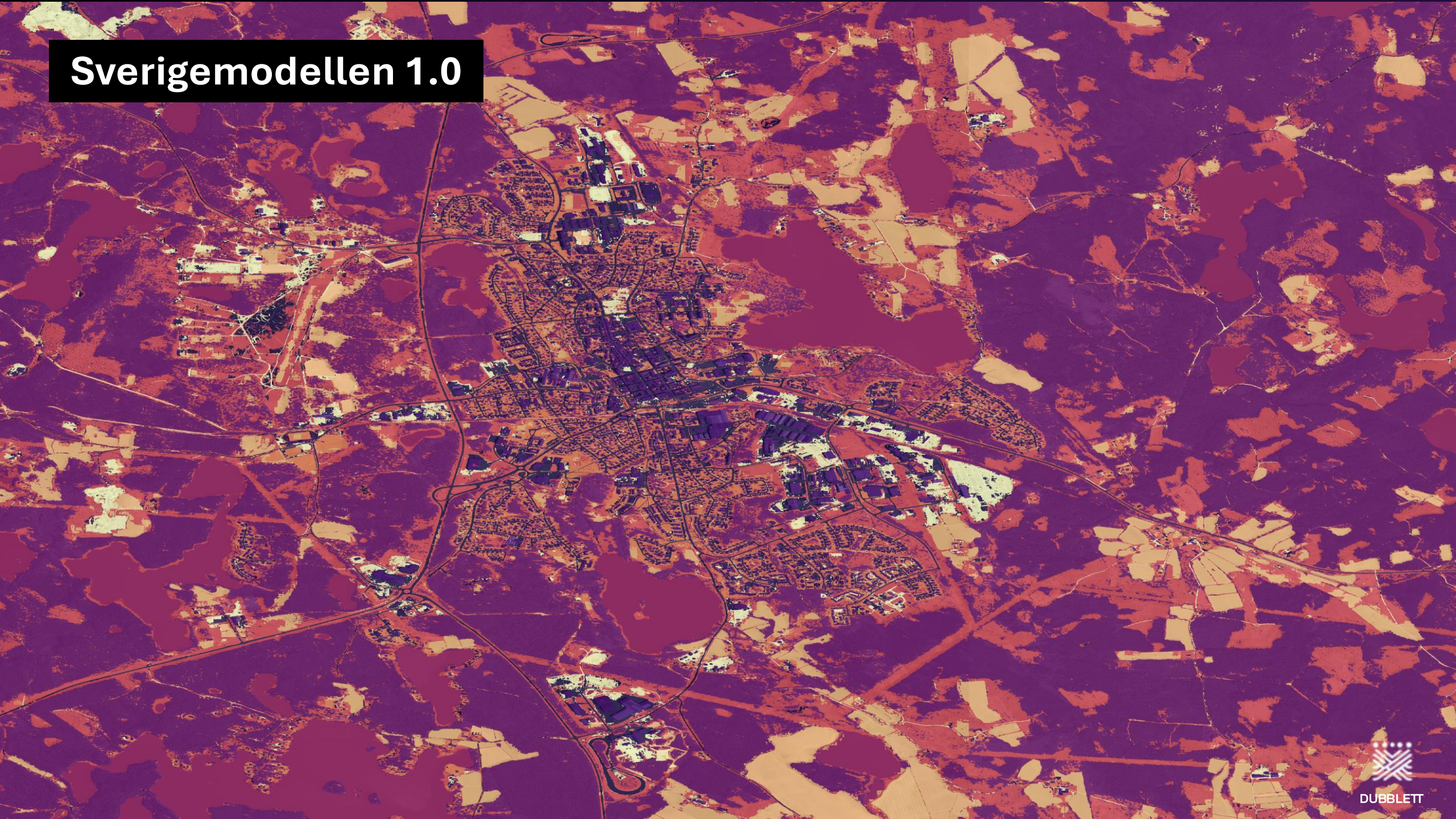
STOCK







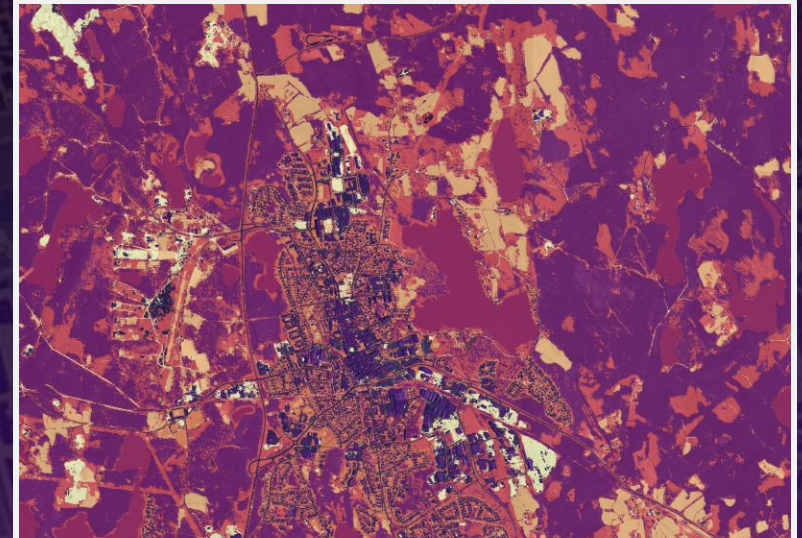
Sverigemodellen 1.0



DUBLETT

Sverigemodellen – Semantisk karta

Dubblett har utvecklat egna AI-modeller som klassificerar mark, byggnader och andra strukturer i flyg och satellitbilder. Civilt används dessa modeller inom stadsutveckling, exempelvis för analyser av **skyfall**, **översvänningsrisk** och **bullerspridning**.



Eksjö



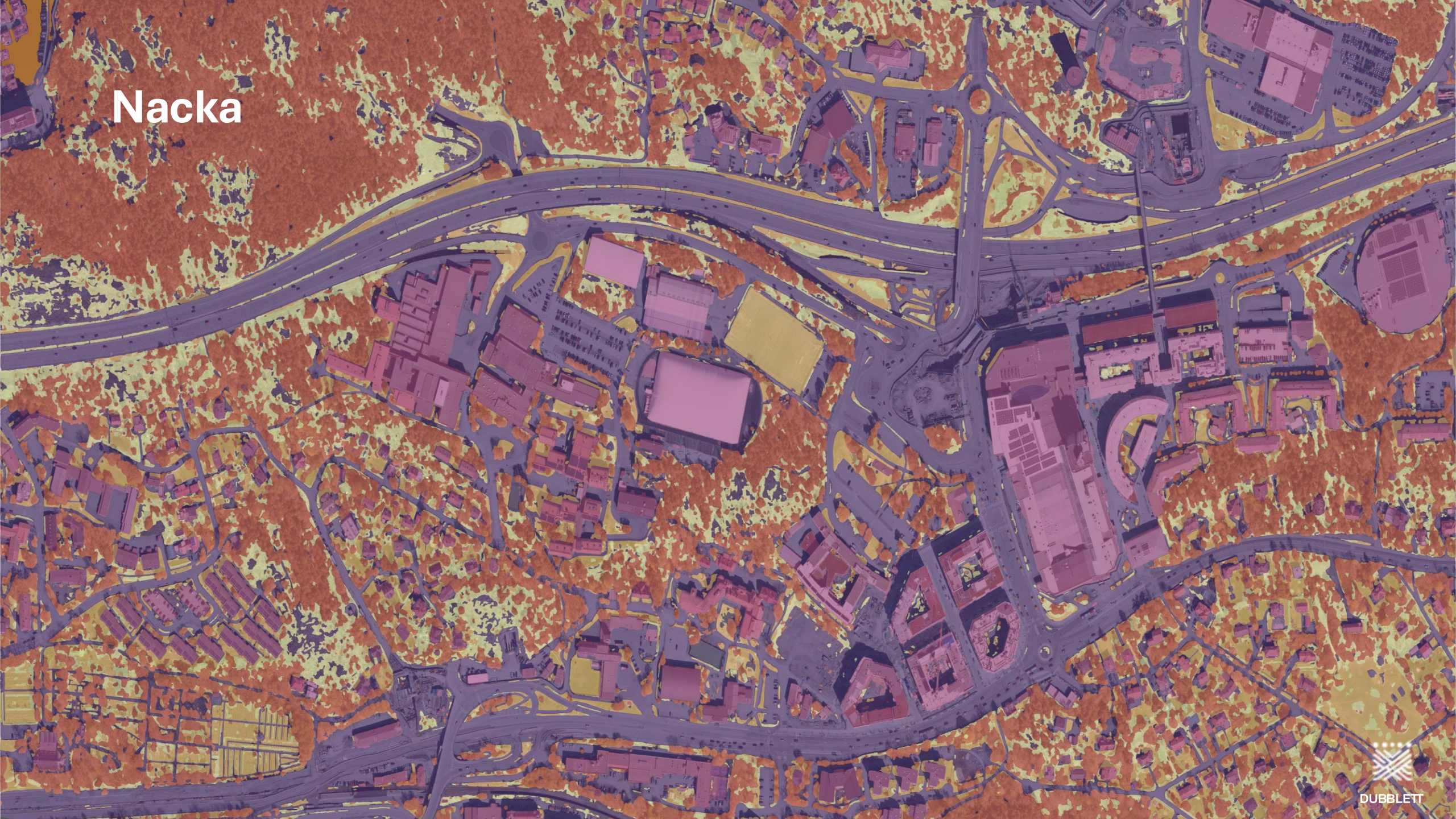
Eksjö



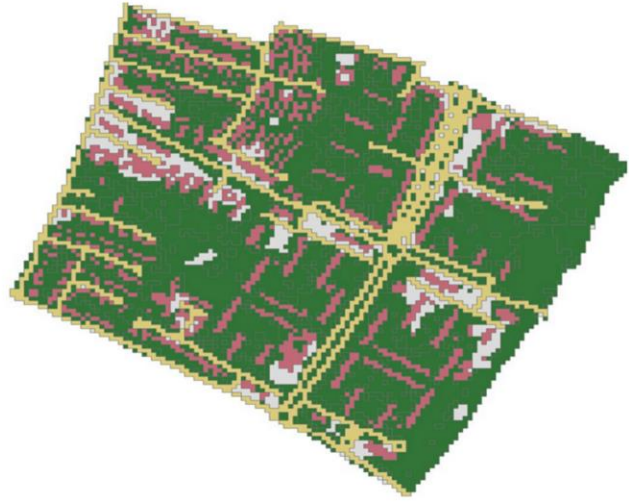
Nacka



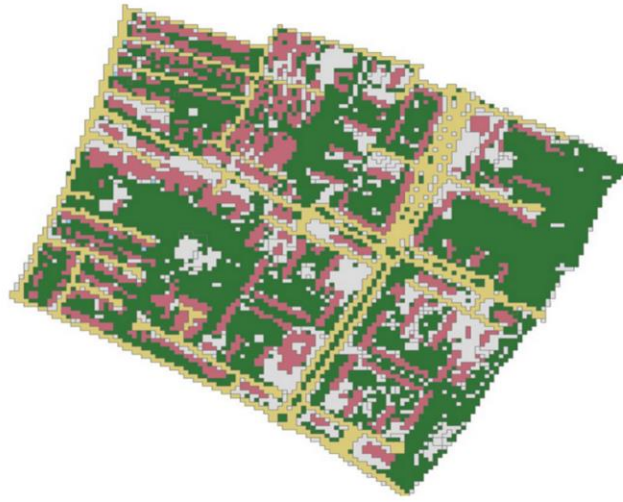
Nacka



NMD - automatic



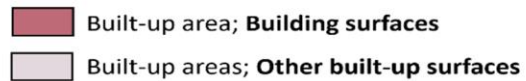
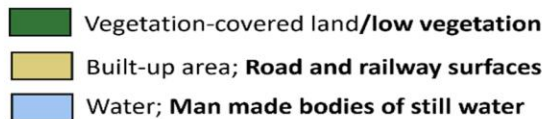
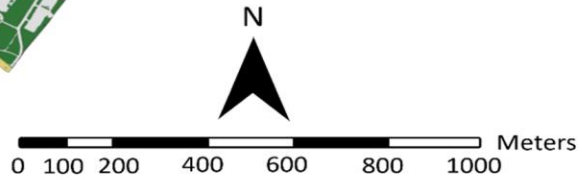
NMD - manual



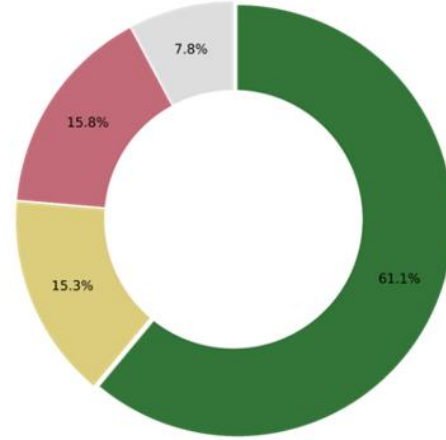
AI - orthophoto



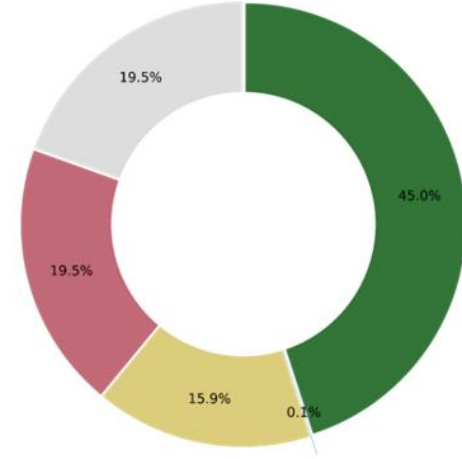
PK - orthophoto



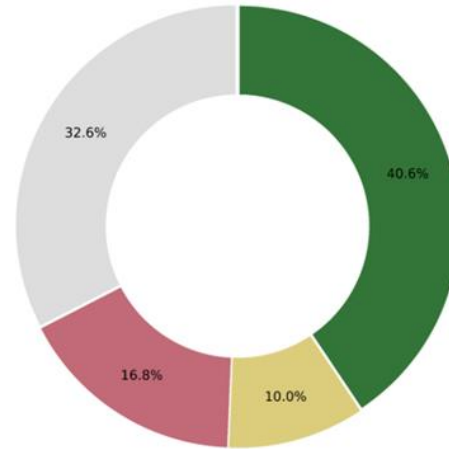
NMD to NS LC thematic classes
(automatic conversion)



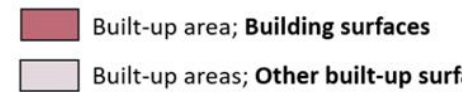
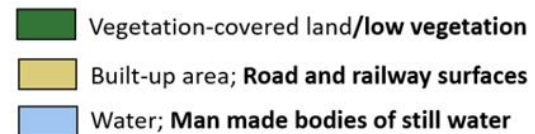
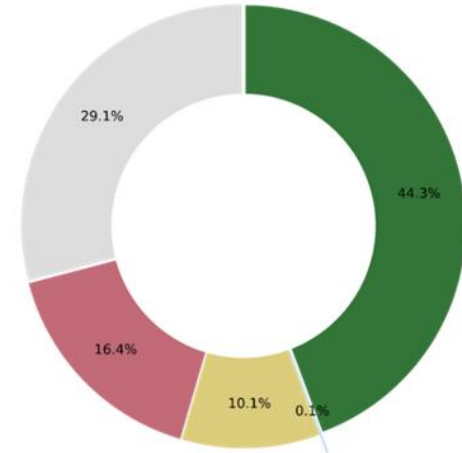
NMD to NS LC thematic classes
(manual inspection - max area rule)

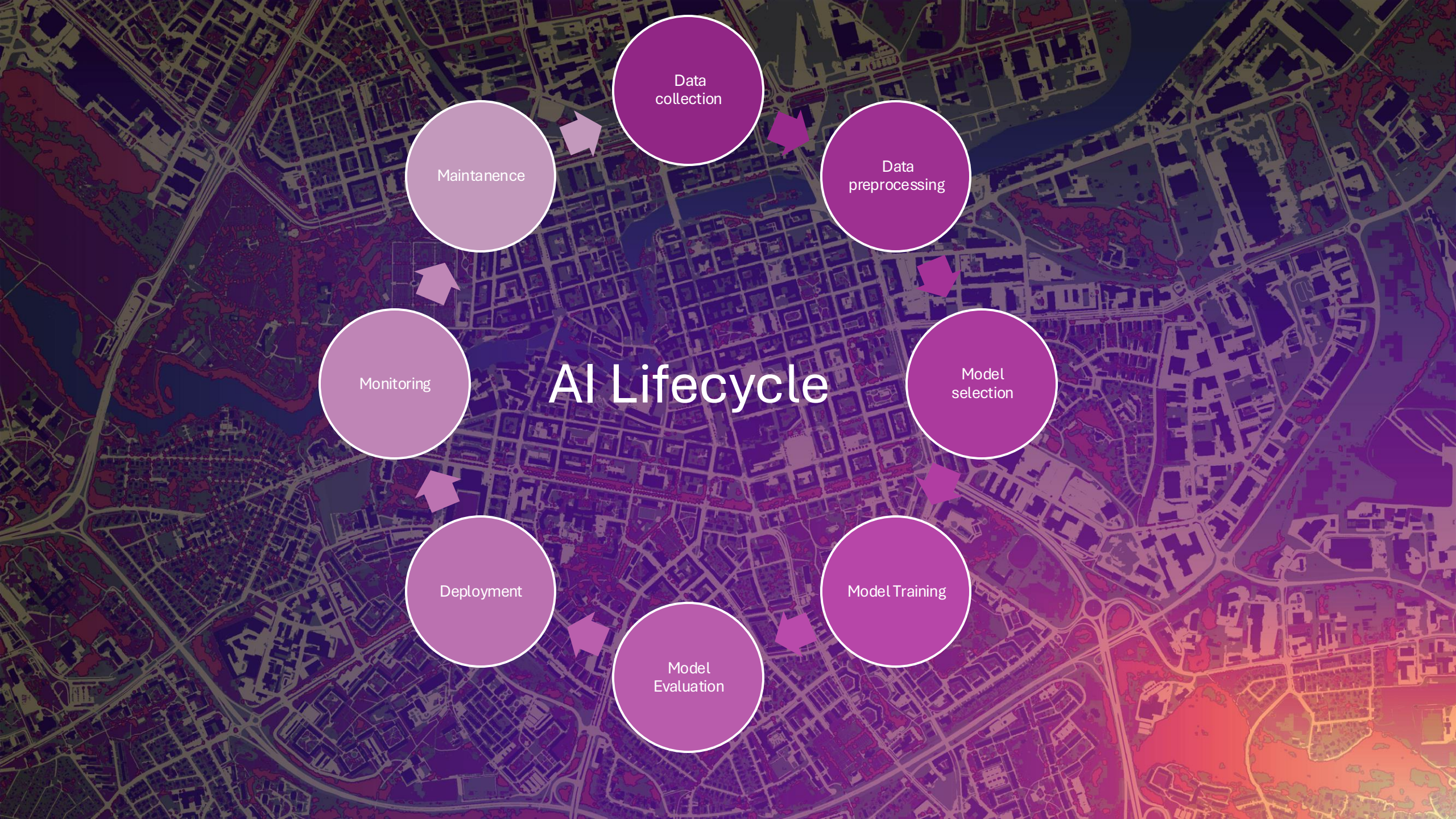


AI-orthophoto to NS LC thematic classes

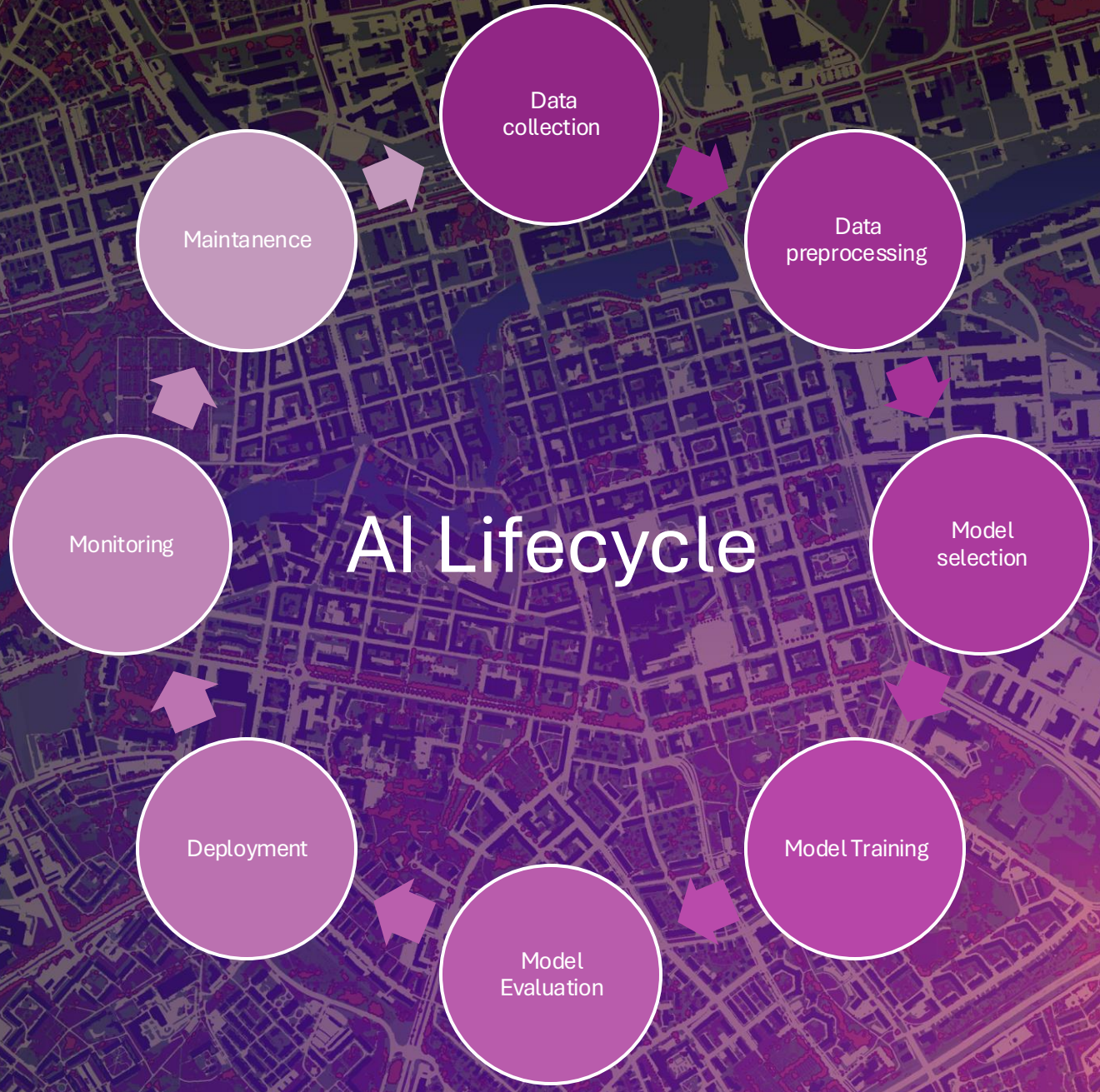


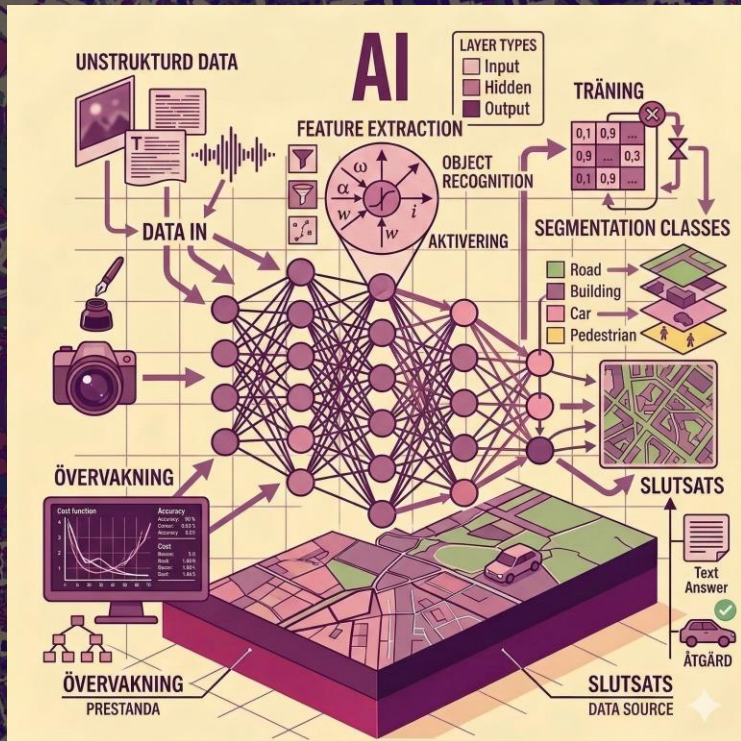
PK + Orthophoto to NS LC thematic classes
(manual digitization)





AI Lifecycle





Snabbhet
Noggranhet



DUBBLETT



www.dubblett.com



<https://www.youtube.com/@DubblettAB>



<https://www.linkedin.com/company/dubblett>