

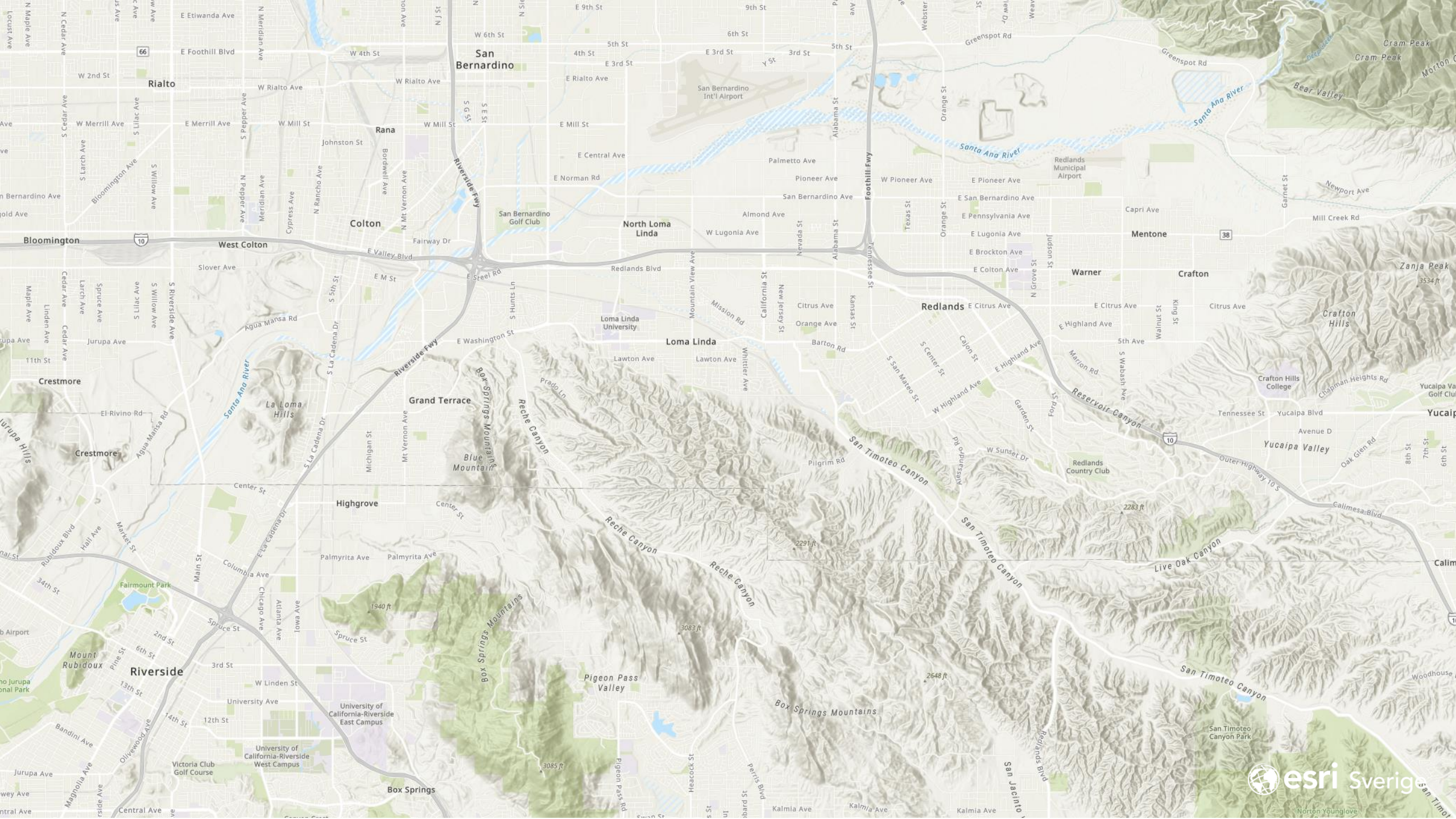
Inomhus-GIS

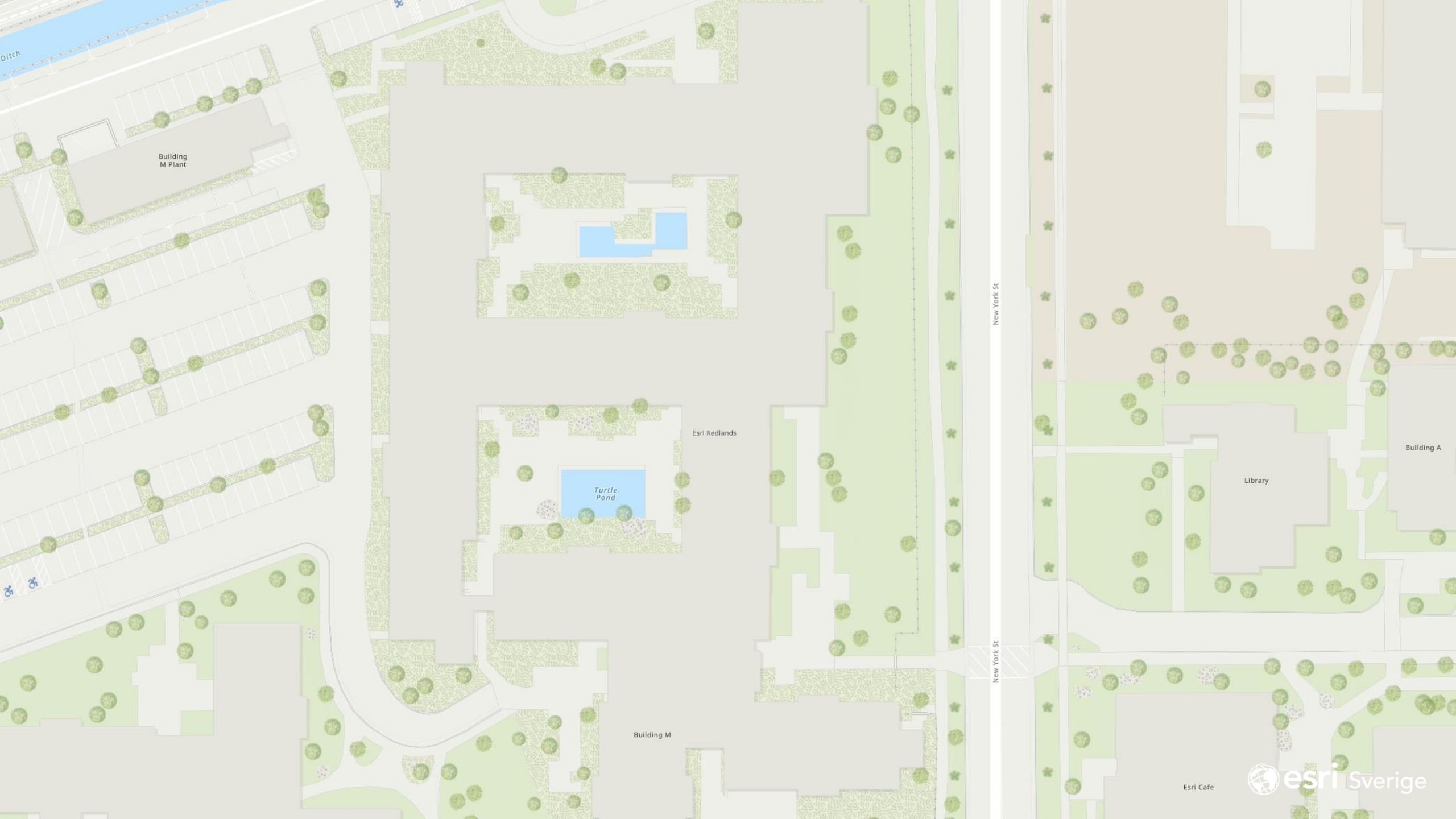
GIS på byggnadsnivå

Björn Lahti
Esri Sverige









Building M Plant

Esri Redlands

Turtle Pond

Building M

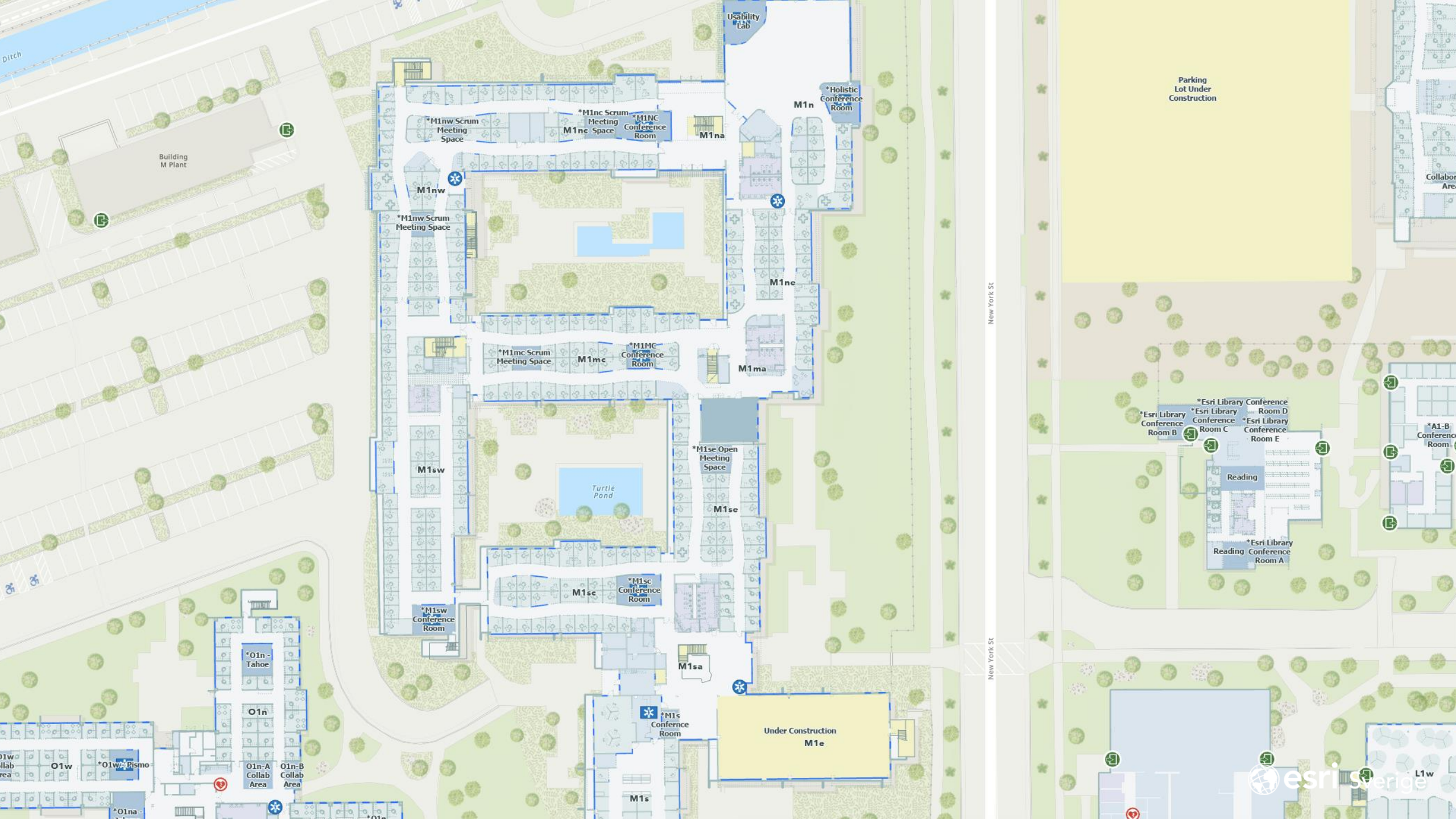
Library

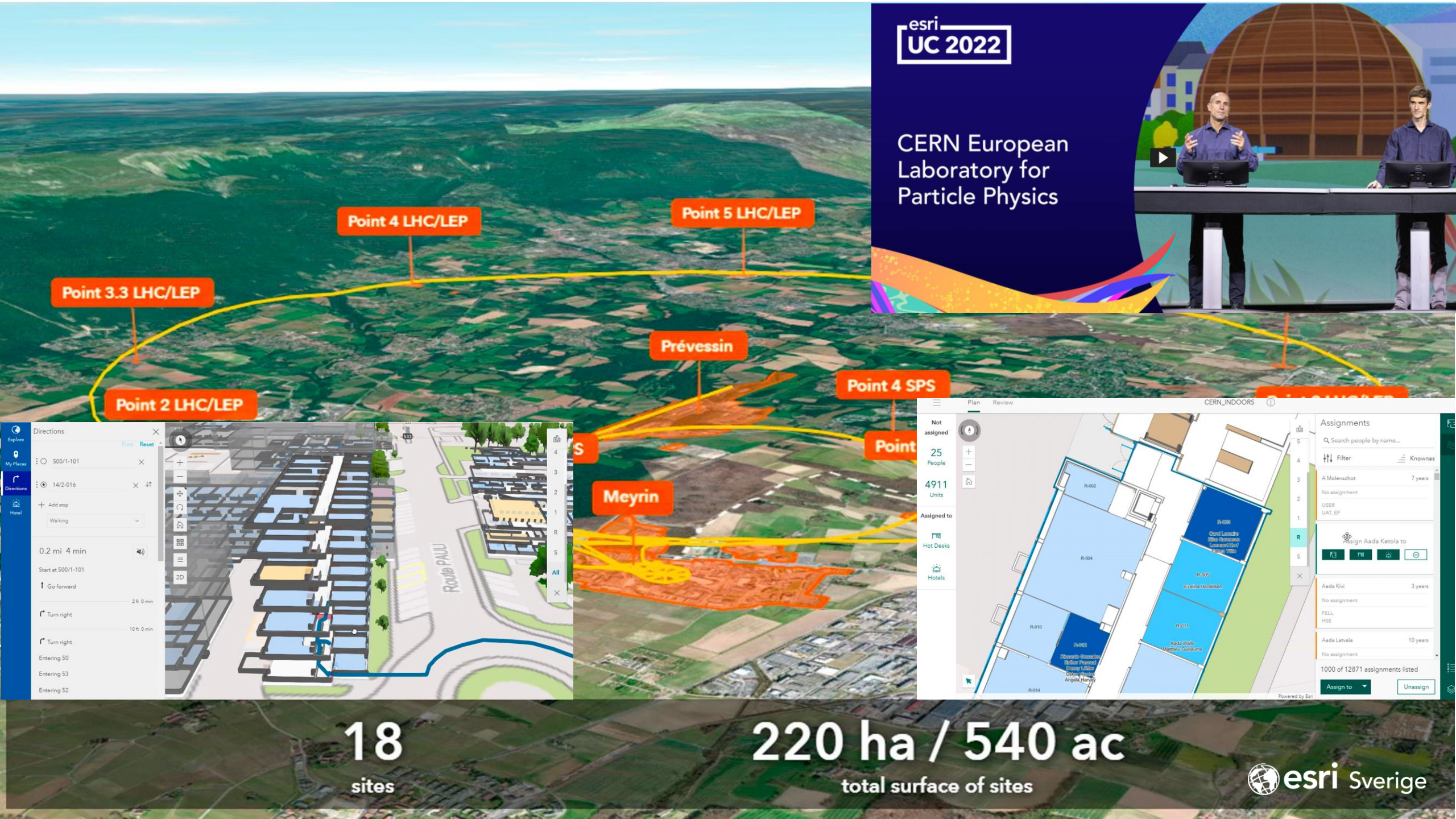
Building A

New York St

New York St

Esri Cafe





esri
UC 2022

CERN European
Laboratory for
Particle Physics



Directions

500/1-101

14/2-016

Walking

0.2 mi 4 min

Start at 500/1-101

Go forward

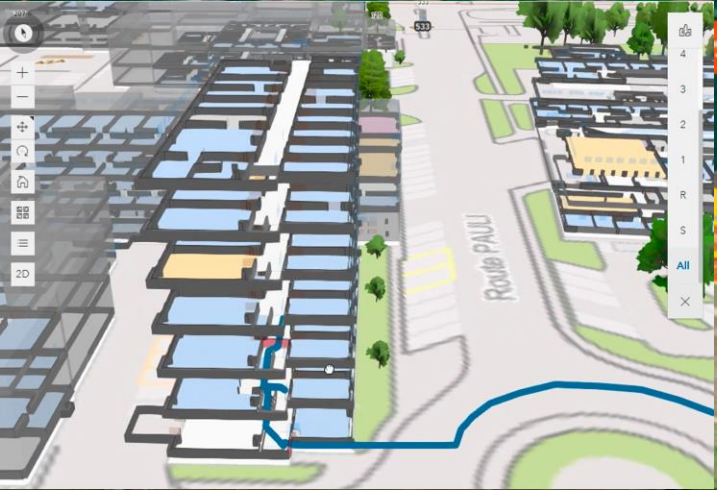
Turn right

Turn right

Entering 50

Entering 53

Entering 52



Plan Review CERN_INDOORS

Not assigned: 25 People, 4911 Units

Assigned to: Hot Desks, Hotels

Assignments

A Molenschot 7 years

Aada Kivi 3 years

Aada Latvala 10 years

1000 of 12871 assignments listed

18
sites

220 ha / 540 ac
total surface of sites



Hartsfield-Jackson Atlanta International Airport





Customer Service Phase-In ⓘ

Facility ▾ »

People

🔍 Search people by name...

📏 Filter ☰ KNOWNAS

Brandon Mitchell 24 years

B1-060

Administrative Assistant
Marketing, Administration

Elizabeth Taylor 14 years

B1-080

IST Technician
Operations, Information Systems
Technology

Irene Mathis 3 years

B1-005

IST Technician
Operations, Information Systems
Technology

Assign Julian Wright to

🏠 📄 🌞 ⌂

Lisa Churchill 15 years

B1-065

5 of 5 people listed

Assign to ▾ Unassign

Not assigned

0 People

797 Units

Assigned to

Hot Desks

Hotels



Enkel datamodell



Legend:
ArcGIS Indoors
Extra tables



Metrolink
Redlands-
Esri Station

Orangewood
High School

Metrolink

W Park Ave

Benjarong

Jennie
Davis Park

Park RR

Building E

New York St

Post Office

B W V

Plant

M

L

A

B

C

D

Z

Buil Sng S

O

Buil

E

E

B

F

F

Bu G G

Gym J

OA

Q

Plant

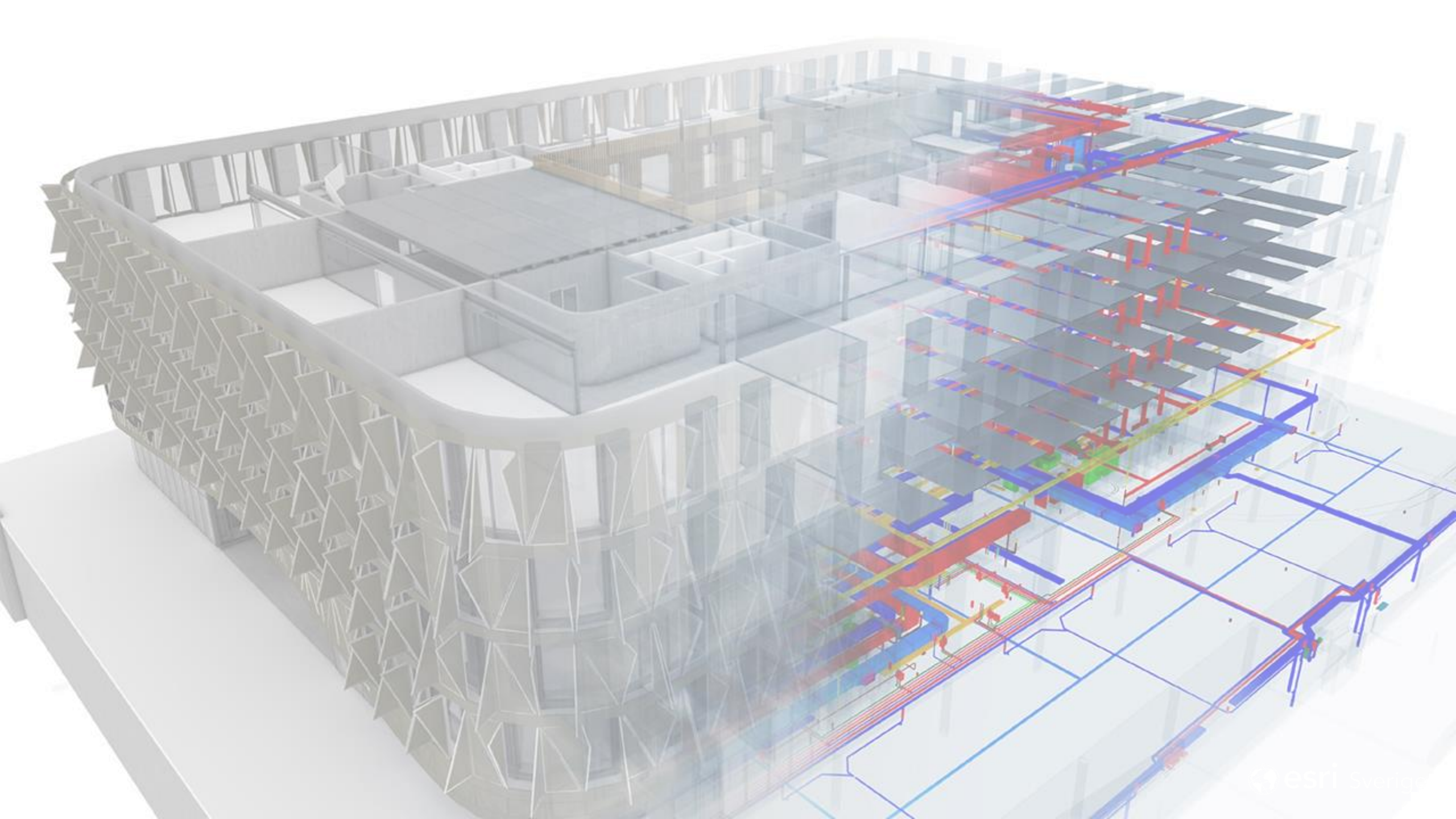
W State St

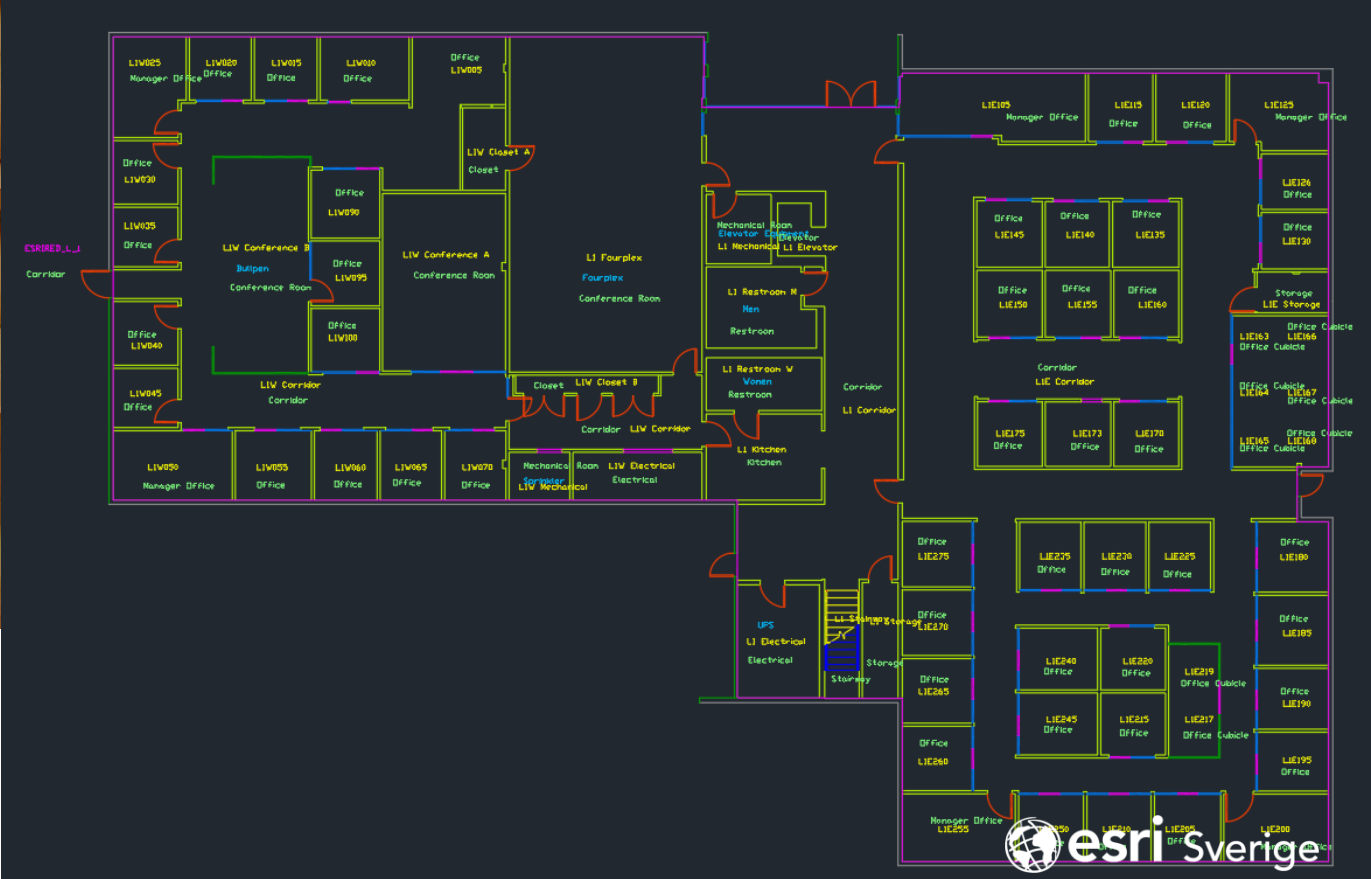
Tennessee St

esri Sverige









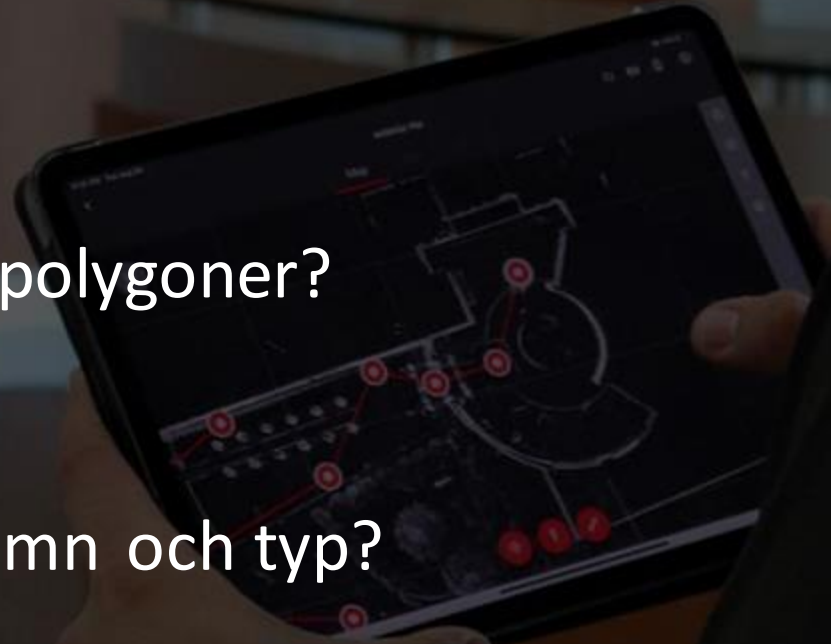
Innehållsförteckning

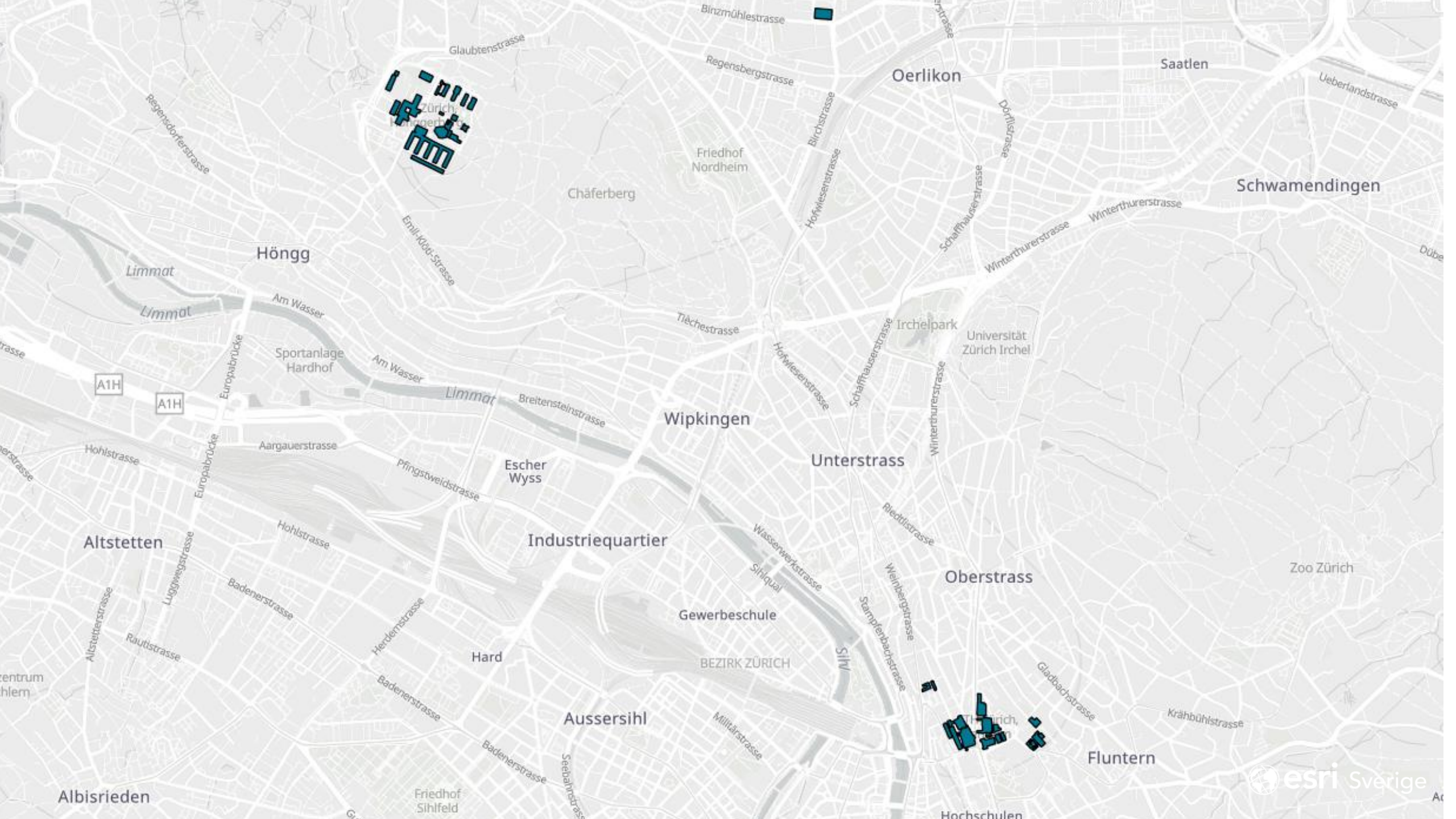
- 📍 Events
- Units

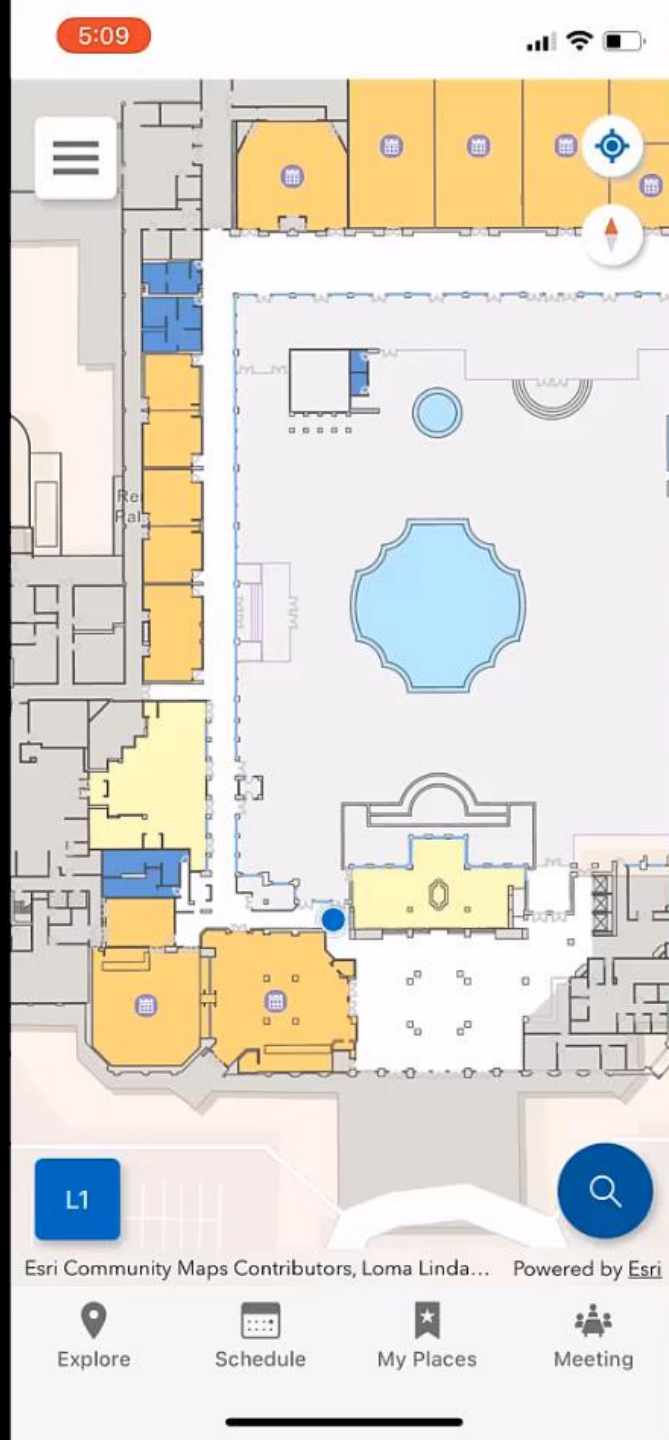


Tips CAD

- Är filerna koordinatsatta?
 - SWEREF/WGS
- Finns det en logisk struktur?
- Är rum representerade som linjer eller polygoner?
 - Är rummen slutna?
- Finns det etiketter för rumsnummer/namn och typ?







Workspace Management Dashboard

Facility Selector
All

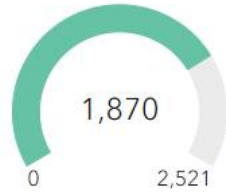
Floor Selector
0



Current Workspace Capacity

74%

Current Workspace Occupancy



Vacant Offices

160

Vertical Floor Aware

Occupied Offices

501

Vertical Floor Aware

Vacant Office-Cubicles

36

Vertical Floor-Aware

Occupied Office-Cubicles

83

Vertical Floor-Aware

Vacant Conference Rooms

31

Vertical Floor-Aware

Occupied Conference Rooms

23

Vertical Floor-Aware

Total Vacant Space

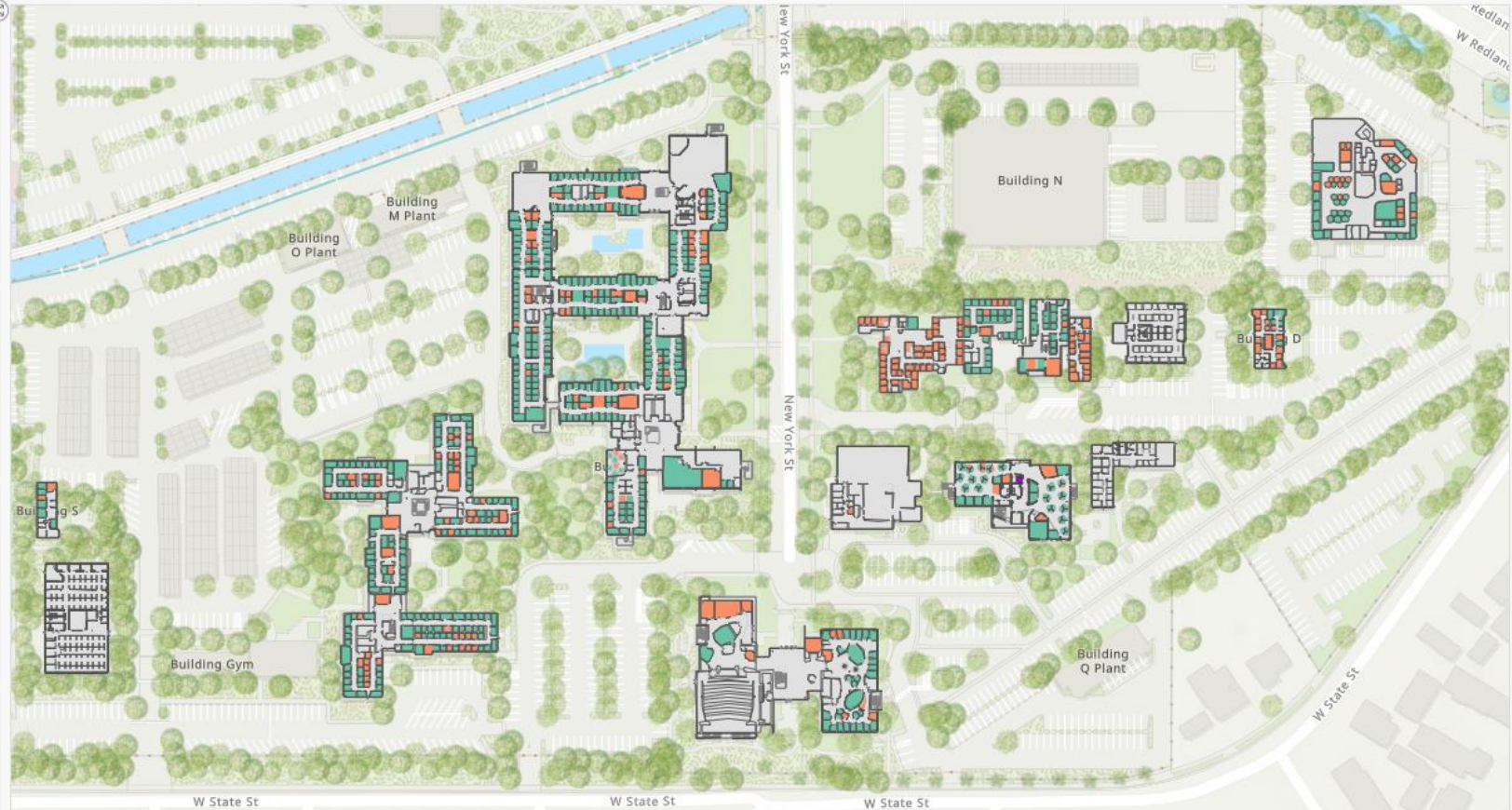
247

Vertical Floor-Aware

Total Occupied Space

607

Vertical Floor-Aware



Esri, NASA, NGA, USGS, FEMA | Esri Community Maps Contributors, Loma Linda University, City of Redlands, County of Riverside, County of San Bernardino, California State Parks, © OpenStreetMap, ... Powered by Esri

Map

Gross vs Net Area by Facility

Total Count by Space Use Type

Total Net Area by Space Use Type

Sammanfattning

- Inomhus GIS = Utomhus GIS + ny baskarta för byggnader
 - Arbetar du med ArcGIS I övrigt fortsatt
 - Saknar du GIS – fundera på de övriga förmågor du kommer behöva under hela livscykeln
- Vad har ni för basdata att utgå från?
 - Befintligt – plan att hantera rimlig nivå
 - Nytt – krav för att vända informationsflödet rätt
- Varför?
 - Kontorshantering – Facility management och resurshantering
 - Visualisera tillgångar inomhus (brandsläckare, skrivare, kaffemaskiner etc)
 - Navigering/positionering inomhus – hitta rätt och optimera
 - Asset tracking – del av asset management
 - IoT – hur smart att hantera utan geografi och visualisering?



Tack för att ni har lyssnat!

Björn Lahti
Esri Sverige AB
bjorn.lahti@esri.se