

An aerial view of a city street, likely in Stockholm, with a digital overlay. The overlay features a large, semi-transparent interface with various data visualizations, including a globe, a line graph, a bar chart, and a circular gauge. A person's hand is visible in the foreground, pointing at the interface. The background shows a street with cars and buildings, with several circular icons floating above the scene.

Etablering av en

Nationell Hubb för Digitala Tvillingar

Workshop Kartdagarna 2024

Agenda

11.00-11.40 Bakgrund och inspiration

11.40-12.00 Varför en digital tvilling?

12.00-12.20 Vad ska en Nationell hubb bidra med?

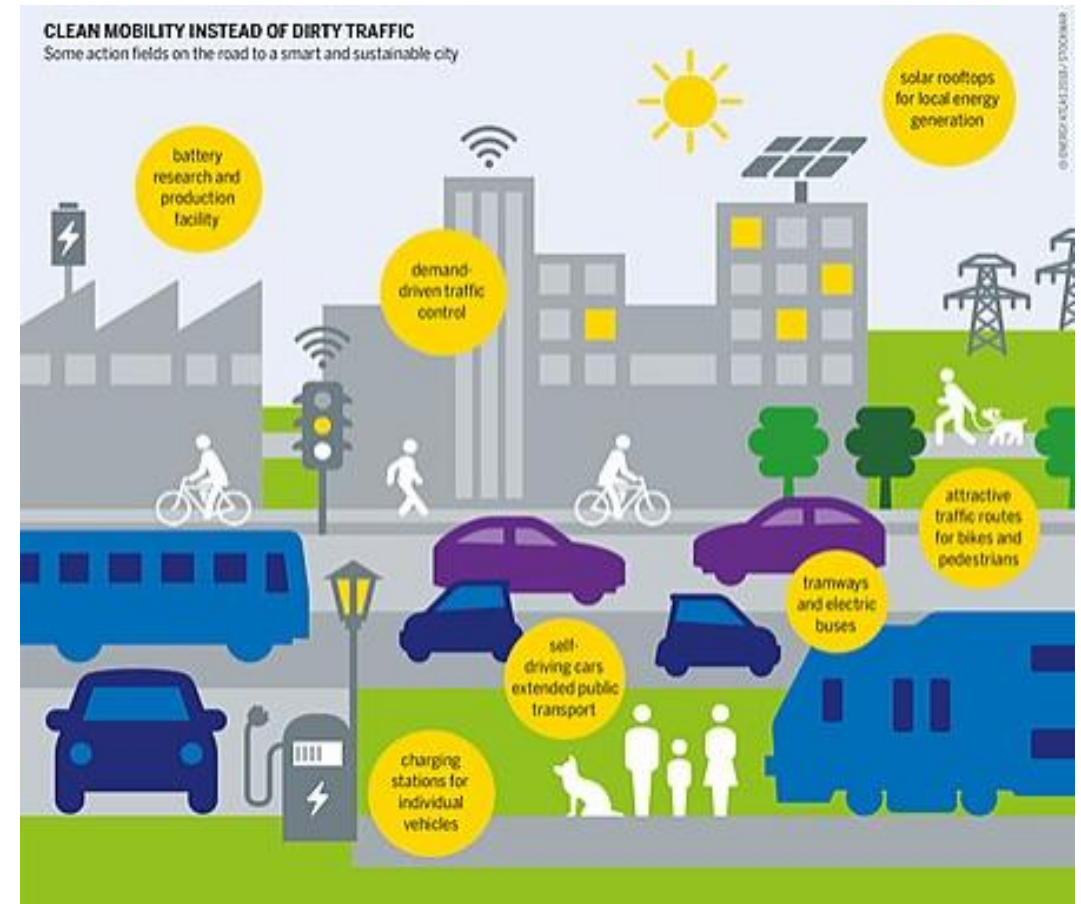
12.20-12.30 Nästa steg



Bakgrund



Datadrivna processer – grunden till digitala tvillingar och smarta städer



Planering – Design – Projektering – Byggskede - Förvaltning

Bakgrund

- 2019-20 **Förstudie Smart Built**
Digital Supply Chain
- 2020-21 **Förstudie Smart Built:**
Rapport: Digitala tvillingar i
samhällsbyggnadsprocessen



- 2021-22 **Fortsättningsstudie Smart Built:**
Fortsättning utredning av projekt
Digitala tvillingar i
samhällsbyggnadssektorn



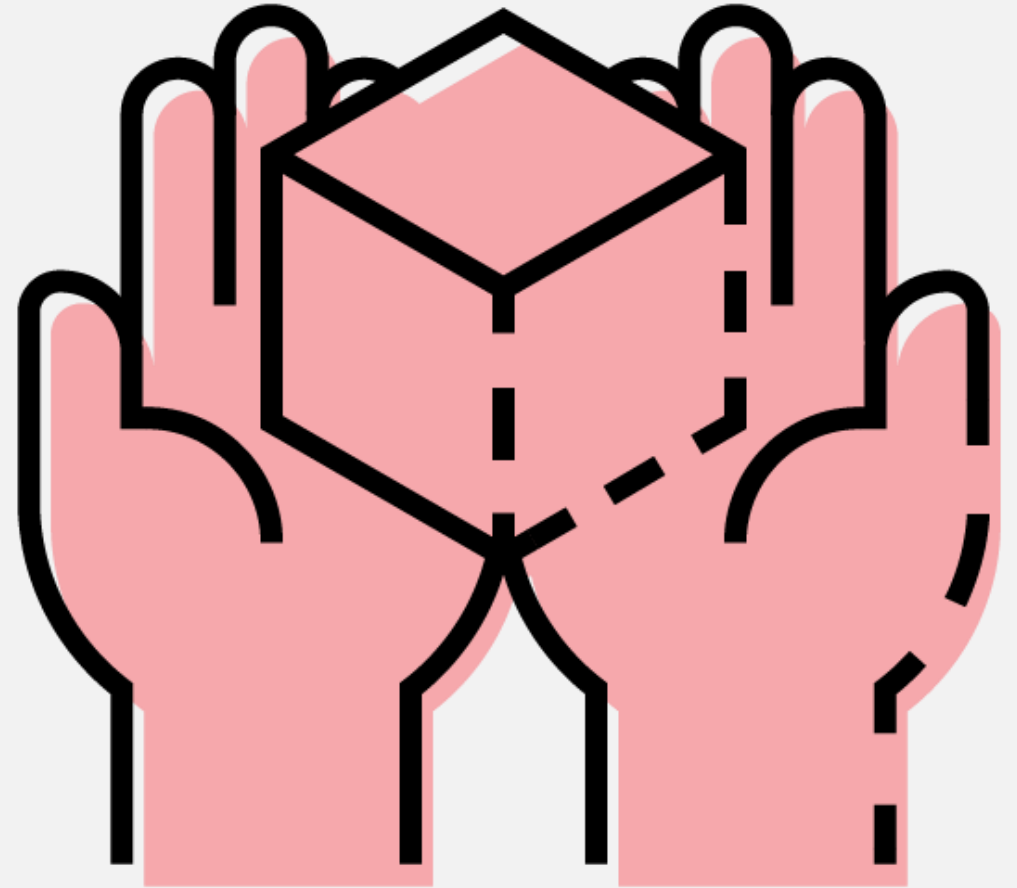
Utlysning 11:
**Digital samhällsbyggnad i
praktiken**
Inlämnad 2/2

Digital Vision Sverige

Nationell samordningshubb
för digitala tvillingar inom
samhällsbyggnadssektorn

Förväntat resultat

- En organisation med långsiktig finansieringsmodell för att driva den nationella hubben
- Ett etablerat nätverk
- Vision och färdplan för att arbeta med digital tvilling i samhällsbyggnadssektorn
- En hemsida och plattform för nätverkande och samskapande



Partners



Kungsbacka



LUDVIKA
KOMMUN



Malmö stad



Eskilstuna
kommun

CHALMERS
UNIVERSITY OF TECHNOLOGY



**VISUAL
SWEDEN**



**DIGITAL TWIN
CITIES CENTRE**



One Reality





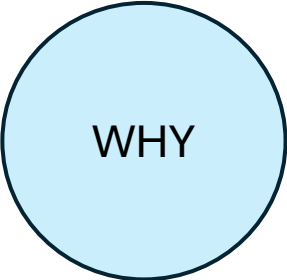
DIGIVIS.SE

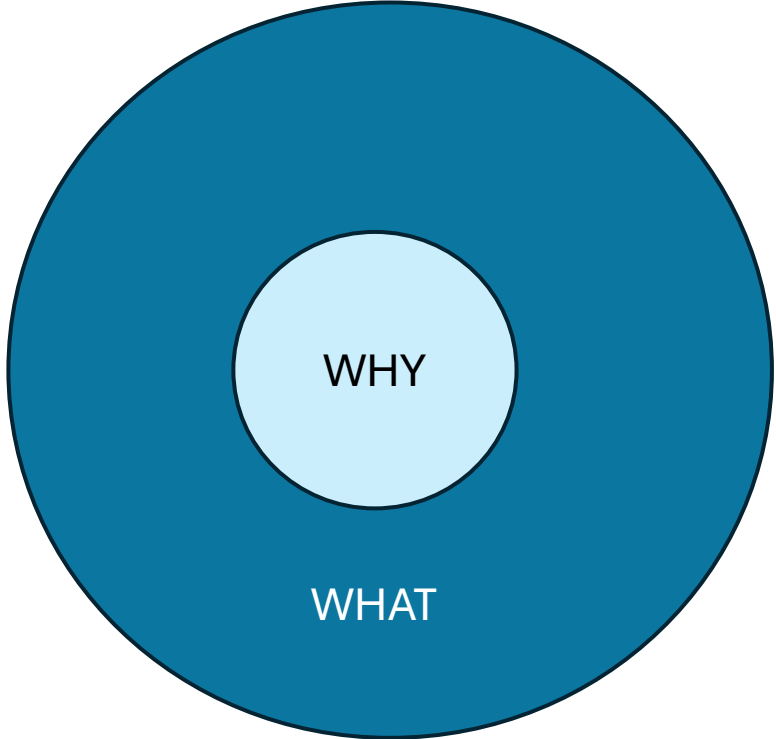
A woman with her hair in a bun is seen from behind, interacting with a futuristic, semi-transparent digital interface. The interface is overlaid on a city street scene, likely in a European city, with buildings and a busy road. The interface displays various data visualizations, including a large circular gauge in the center, a bar chart on the right, and several smaller icons and text elements on the left. The overall aesthetic is high-tech and futuristic, with a blue and white color palette. The word "Inspiration" is written in a large, white, sans-serif font across the middle of the image.

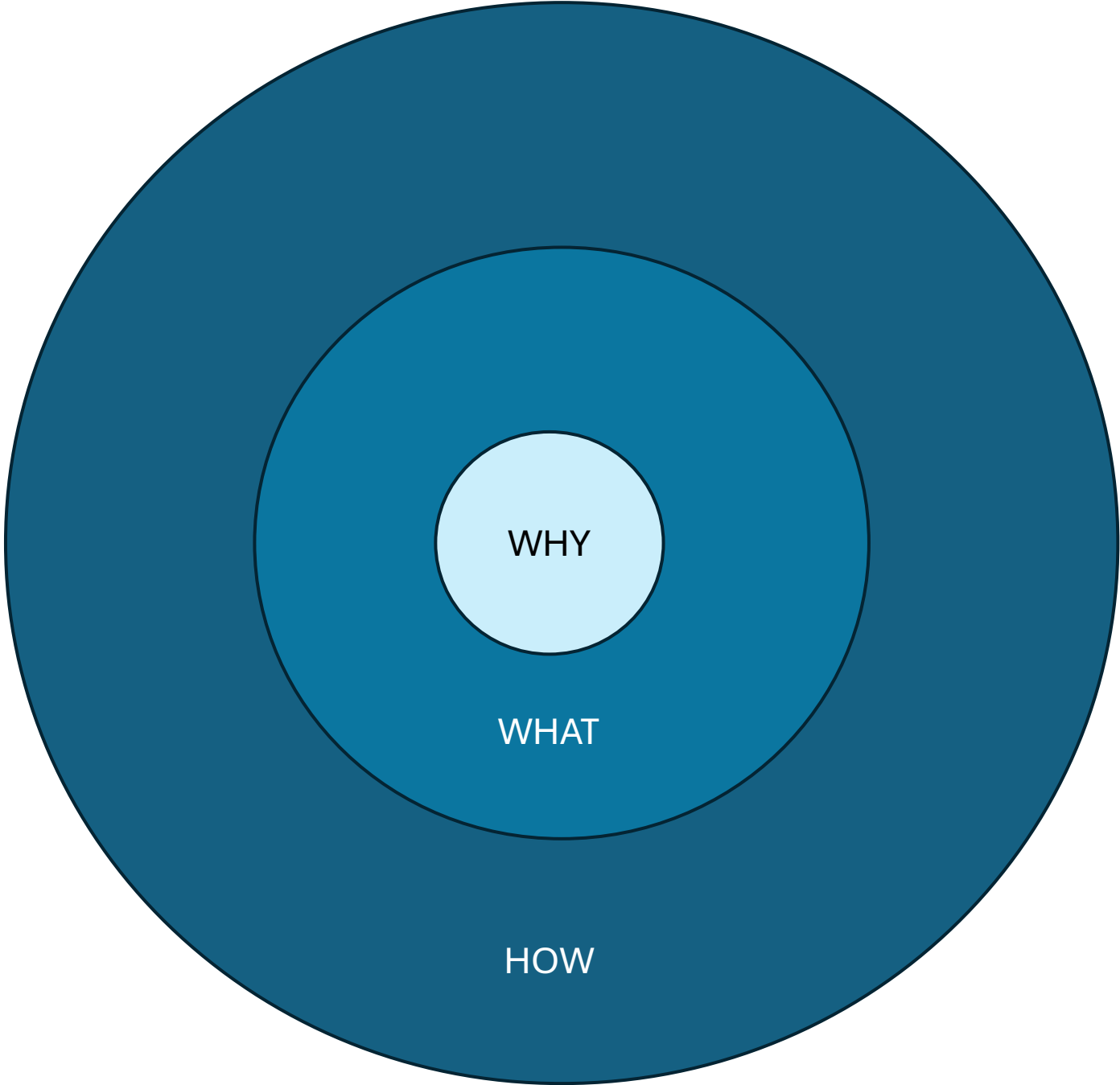
Inspiration

The image depicts a woman from behind, looking at a futuristic digital interface. The interface is a semi-transparent dashboard with various data visualizations, including a large circular gauge in the center, a bar chart on the right, and several smaller charts and icons on the left. The background is a high-angle view of a city street with buildings and traffic, overlaid with several circular icons: a globe, a signal tower, and a circular diagram. The overall aesthetic is high-tech and data-driven.

Varför en digital tvilling?







WHY

WHAT

HOW

DIGITAL TVILLING MER ÄN BARA TEKNIK



ANVÄNDARAPPLIKATIONER

ANALYS & DATABEARB

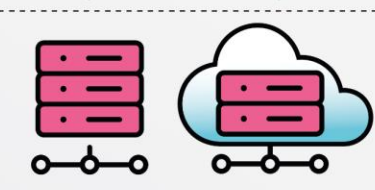
PLATTFORM

BASDATA

TEKNIK

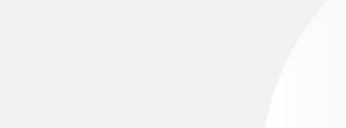
PROCESS

MÄNNISKOR



GEODATA
CAD/BIM
ETC

IoT &
SENSOR
ETC



DATAINSAMLING

VISION
BEHOV & EFFEKT

MEDBORAGRE

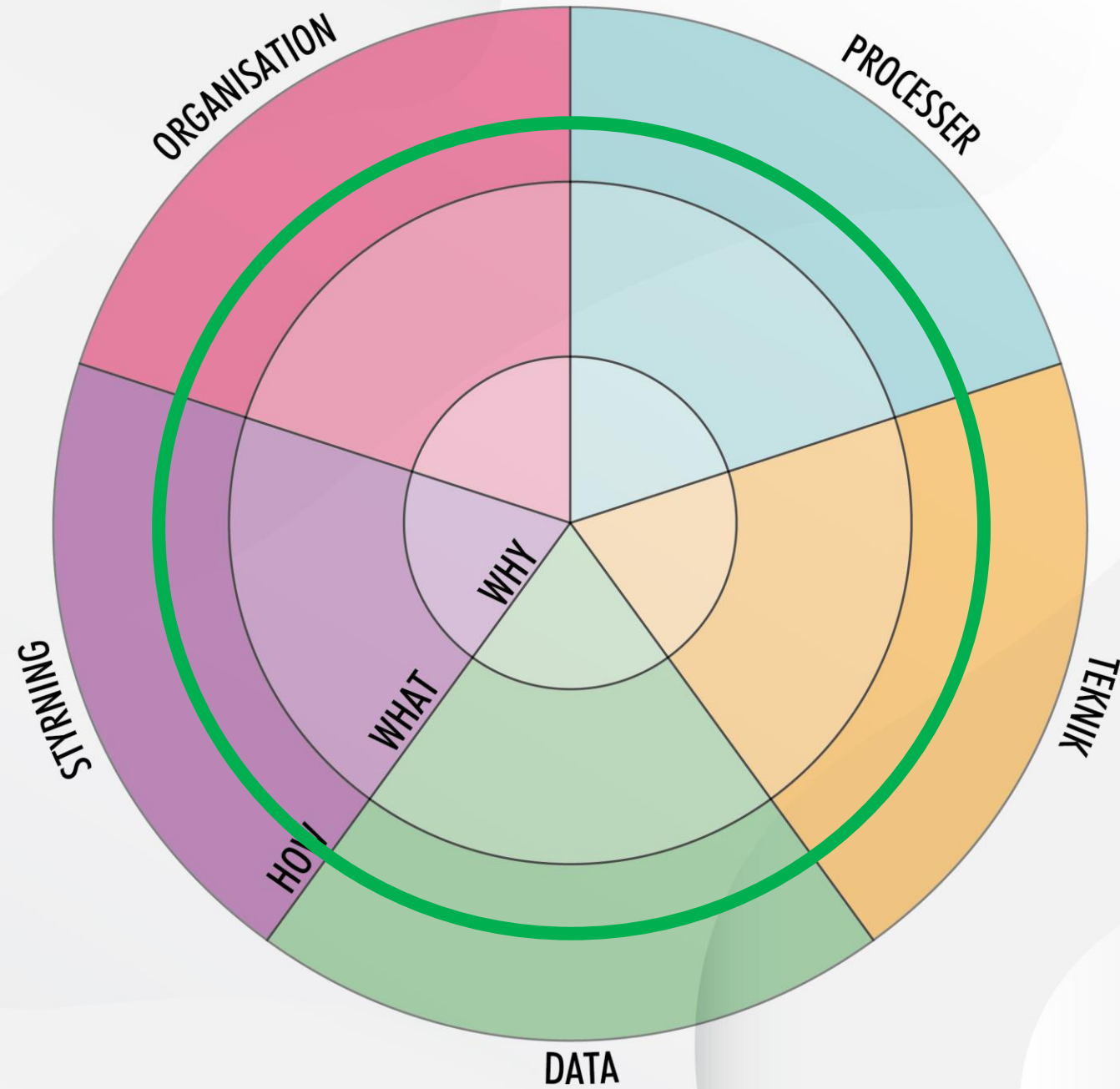
BESLUTFATTARE

TJÄNSTEMÄNN & EXPERTER

SMART BUILT
ENVIRONMENT

NHDT
NATIONELL HUB DIGITALA TVILLINGAR

SWECO  RI
SE



← SMART BUILT ENVIRONMENT →

NHDT
NATIONELL HUB DIGITALA TVILLINGAR

SWECO  RI SE

A woman is seen from behind, looking at a large, semi-transparent digital interface that appears to be floating in the air. The interface displays various data visualizations, including a central circular chart, a bar chart, and several smaller icons and text elements. The background is a detailed, high-angle view of a city street with buildings, cars, and a large cathedral. The overall scene is illuminated with a cool, blue-toned light, suggesting a futuristic or digital environment.

Vad ska en nationell hubb
bidra med?

A woman with her hair in a bun is seen from behind, interacting with a futuristic, semi-transparent digital interface. The interface is overlaid on a city street scene, likely Stockholm, with buildings and traffic visible. The interface displays various data visualizations, including a large circular gauge in the center, a bar chart on the right, and several smaller charts and icons on the left. The overall aesthetic is high-tech and futuristic, with a blue and white color palette. The text "Nästa steg" is prominently displayed in the center of the image.

Nästa steg

Vad händer nu?

- Workshop 8 maj – tema Datakällor och interoperabilitet
- Under hösten, fler workshops – tema TBD
- Insamling av use cases
- Vision och färdplan
- Organisationsmodell för den framtida hubben



Vill ni vara med?

Kontakta jenny.carlstedt@ri.se

