



Project SmartSDI: Concept for improving Serbian NSDI for sustainable development

Ljiljana Živković, PhD spatial planner

Section Leader for Project Planning, Funding and Innovation

Department for Project Planning and Management

Sector for Development and Innovation

Republic Geodetic Authority

[ljivkovic@rgz.gov.rs](mailto:lzivkovic@rgz.gov.rs)

Project "ePlan4eSpace – SmartSDI" (SERB22)

Lantmäteriet dnr: LM2022 – 060521, SIDA Contribution No. 15655



Content

- Introduction: NSDI in Serbia
- Serbian NSDI development framework
- Strategic action plan for Serbian NSDI improvement
- Project SmartSDI concept
- Expected Project results
- Conclusions



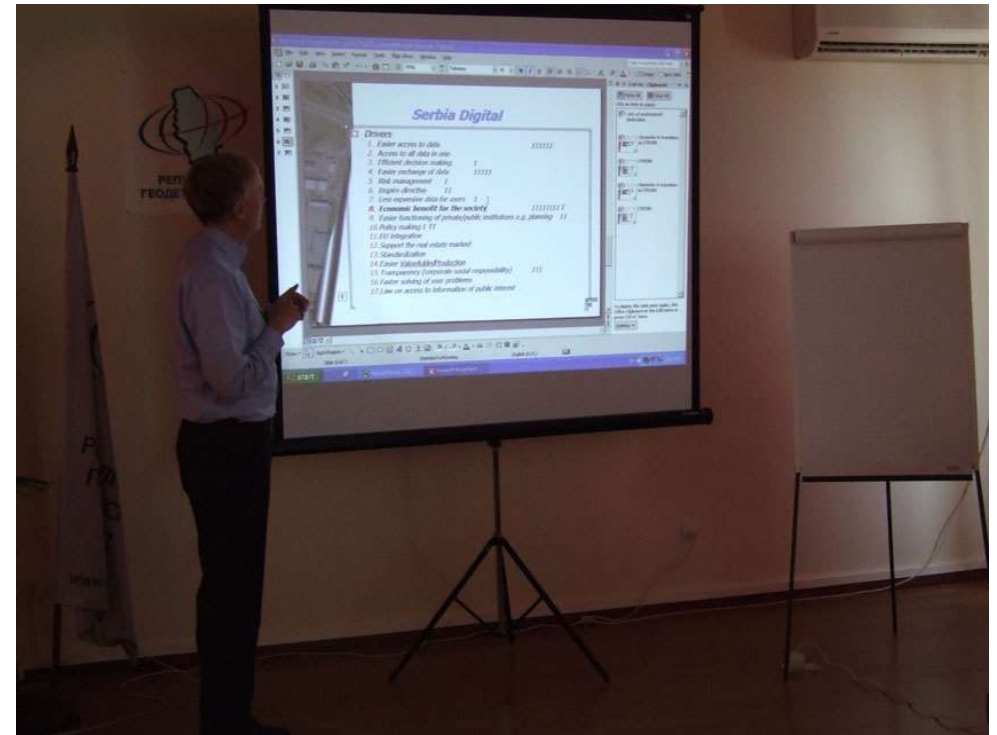
REPUBLIC GEODETIC AUTHORITY



LANTMÄTERIET

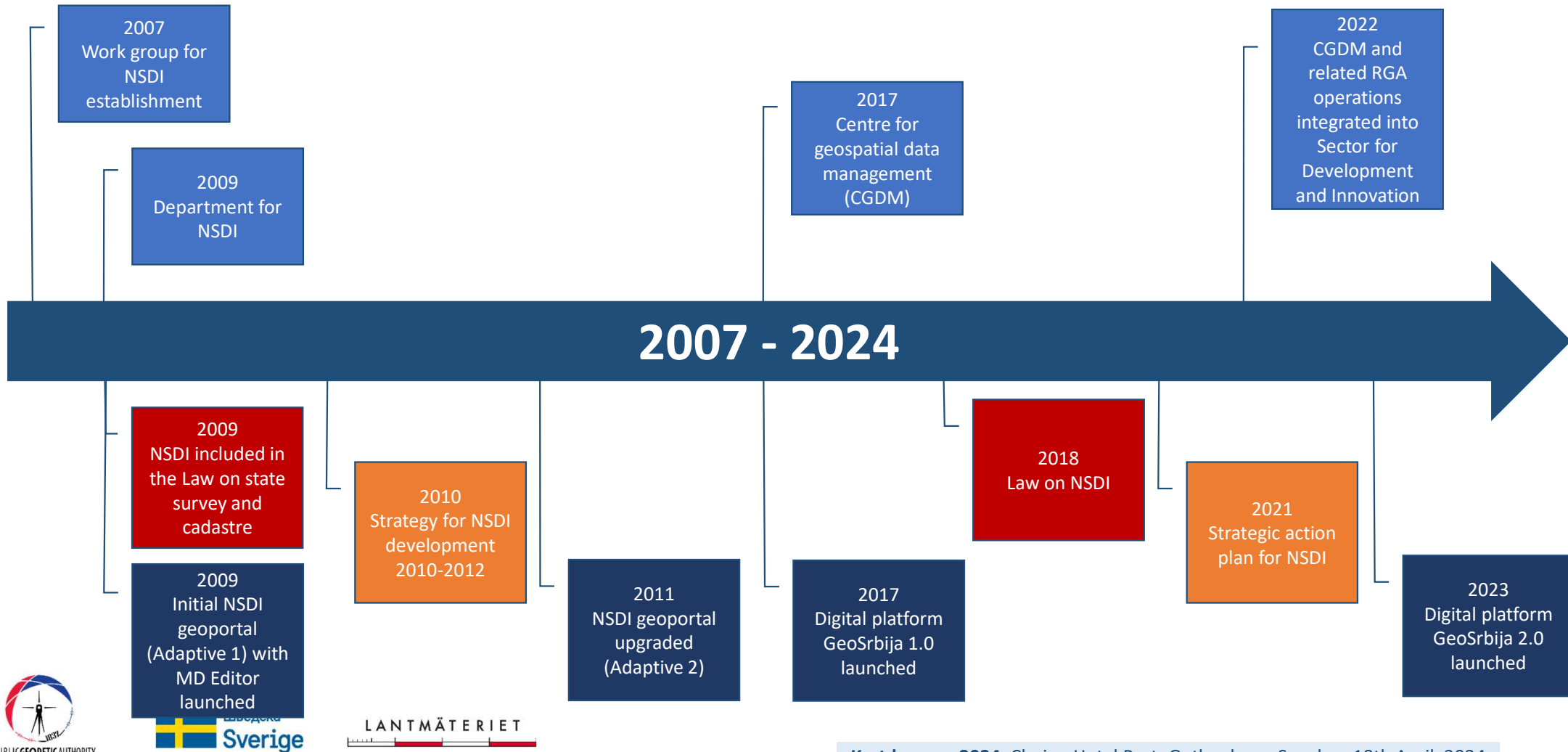
Kartdagarna 2024, Clarion Hotel Post, Gothenburg, Sweden, 18th April, 2024

Work group for Serbian NSDI establishment held in RGA back in 2007



Kartdagarna 2024, Clarion Hotel Post, Gothenburg, Sweden, 18th April, 2024

Serbian NSDI legal, organizational and technology frameworks

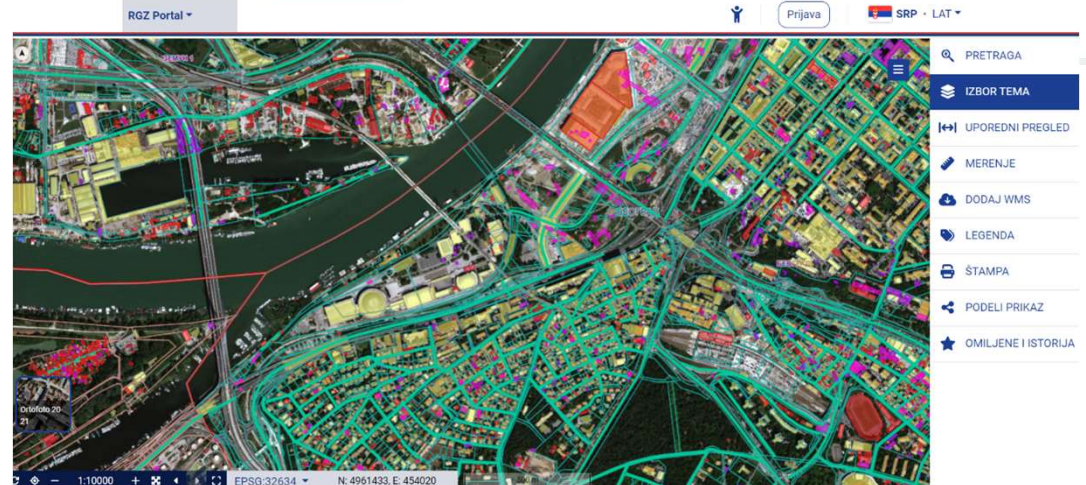
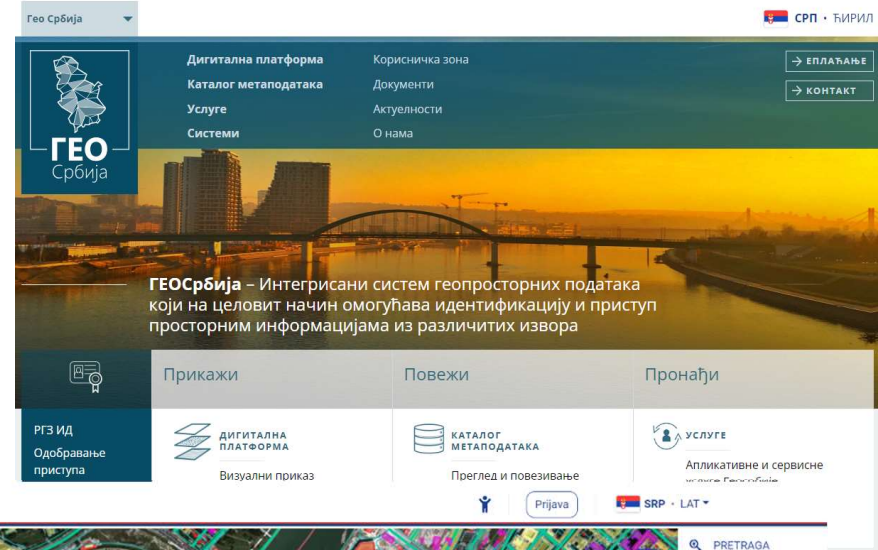


Serbian NSDI geospatial data and services evolution

- From several datasets and metadata to modern distribution environment with MD Catalogue, 300+ datasets and user needs adjusted OGC services



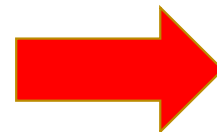
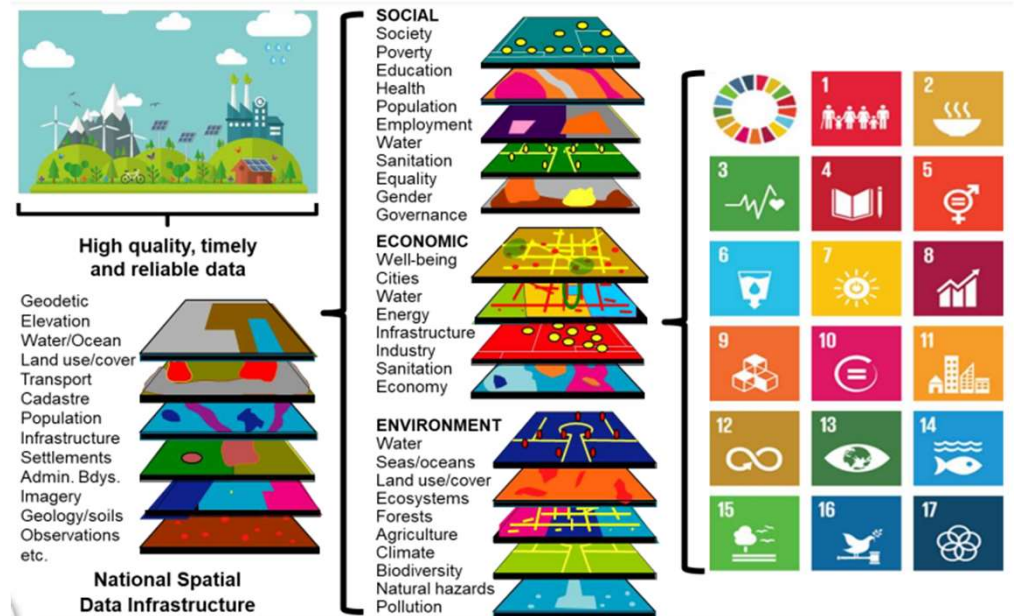
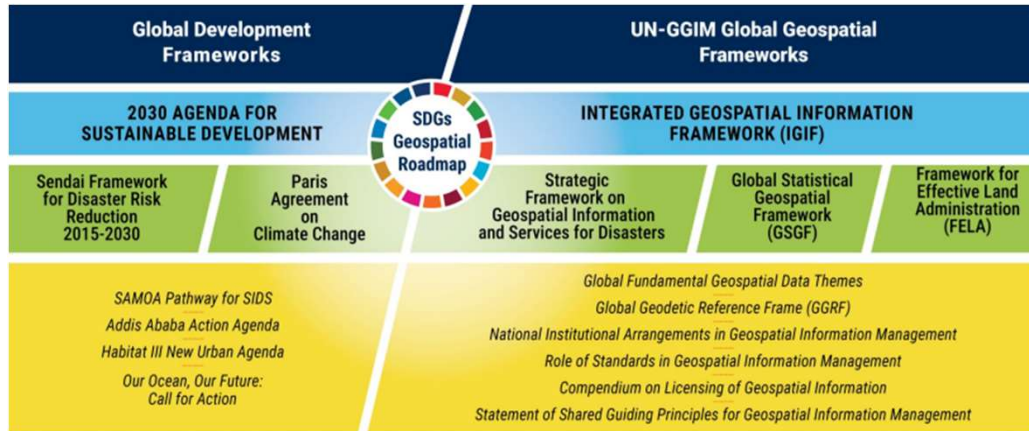
2024



REPUBLIC GEODETIC AUTHORITY



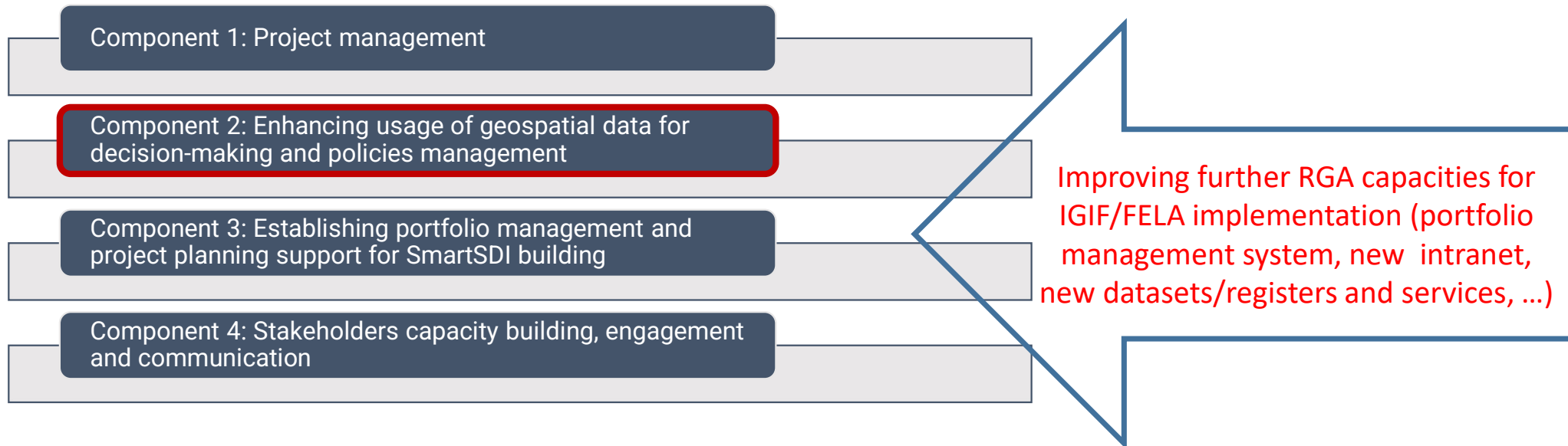
Serbian NSDI development framework



Project SmartSDI

- Project impact or main outcome to be reached after the 3 years (2023-2025) of Project implementation by RGA and Lantmäteriet, and funded by SIDA

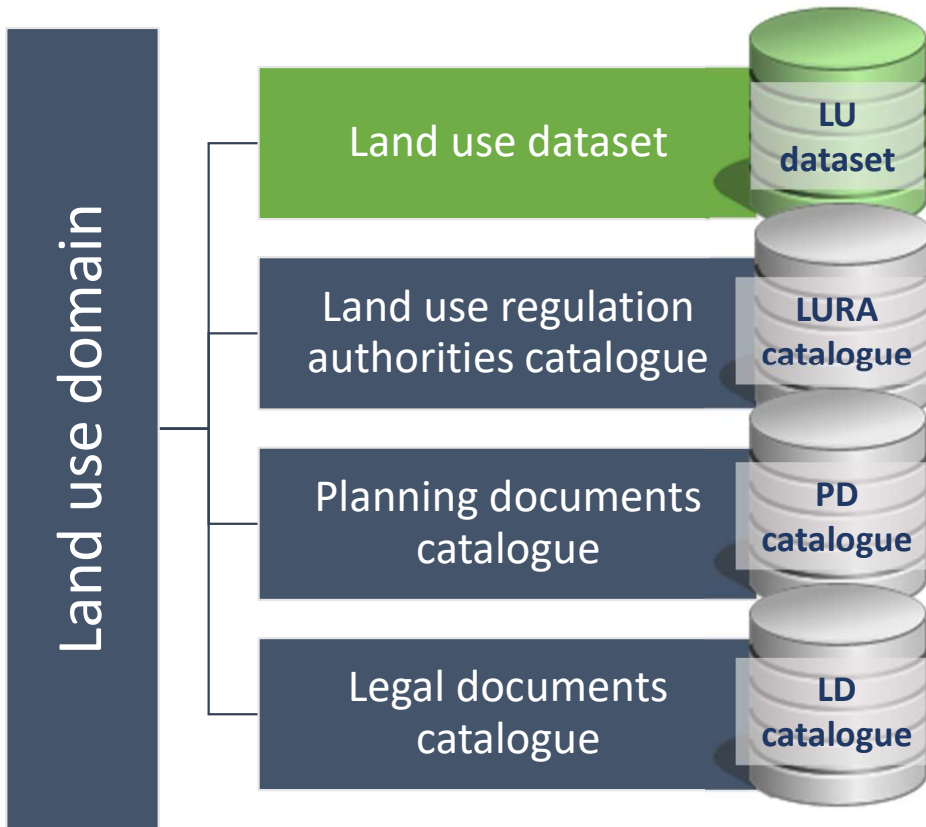
National, provincial and local level public administrations in Serbia are making efficiently and transparently decisions in democratic and socially inclusive manner about development activities that improve quality of work and life environment for all citizens through sustainable usage of available land and other natural and manmade resources, processes and services



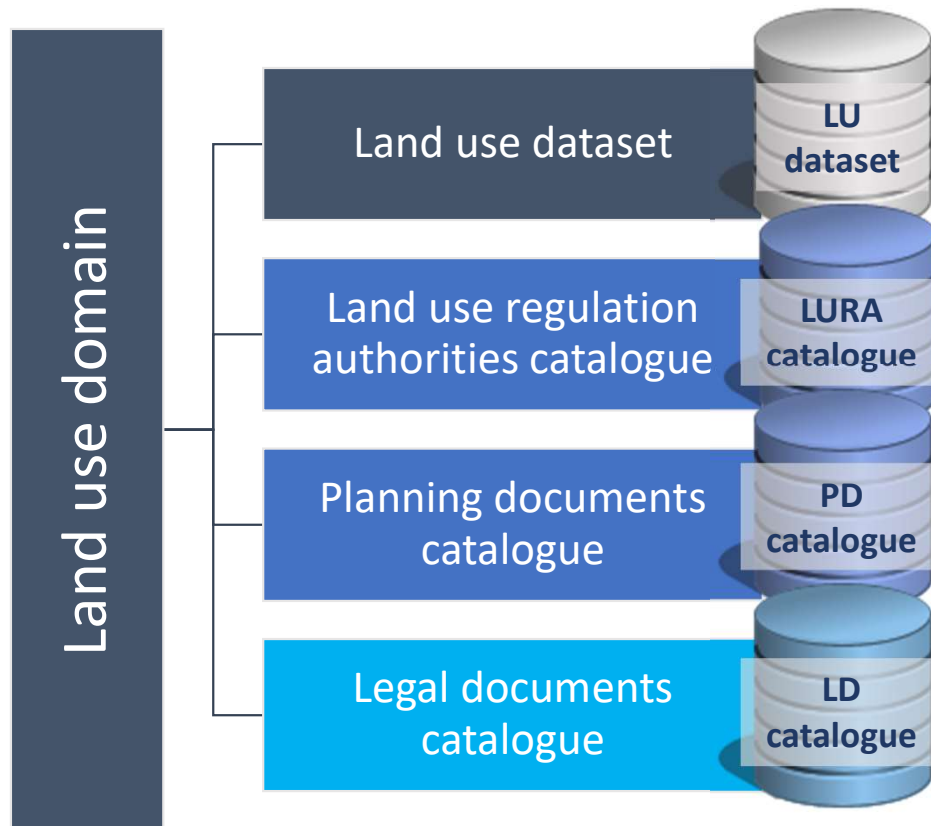
Component 2: Expected Project results (1)

- Creation of a new public sector geospatial dataset (HVD)
 - **LU dataset:** national geospatial database with standardized land uses on cadastral parcel level, aimed at an effective land administration and sustainable development in Serbia
 - Project pilot data:
 - **Detailed regulation plan**
 - **Spatial plan of special purpose area** (infrastructure, national parks, mining areas,...)

- **Outputs:** standard land uses, land use data model, plans digitalization methodology
- **Impacts:** data-driven planning and decision-making for sustainable development
- **Effects:** digital transformation of spatial and urban planning process, process of property legalization, support for infrastructure projects implementation



Component 2: Expected Project results (2)



- Creation of the new public sector geospatial datasets by integrating non-geospatial with RGA geospatial datasets (HVDs)
 - **LURA catalogue:** national geospatial register with LURA jurisdiction areas
 - **PD catalogue:** national geospatial register with PD areas
 - **LD catalogue:** national register of LD relevant for sustainable planning, building and territorial development in general
- *Outputs:* integration methodology, geospatial standards implementation
- *Impacts:* data interoperability, new insights/knowledge creation for place-based approach in sustainable development policies management
- *Effects:* SDG indicators monitoring



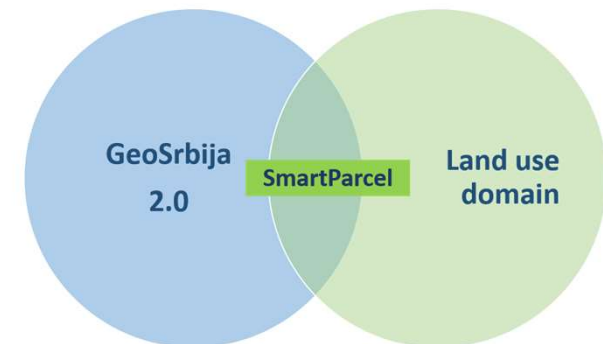
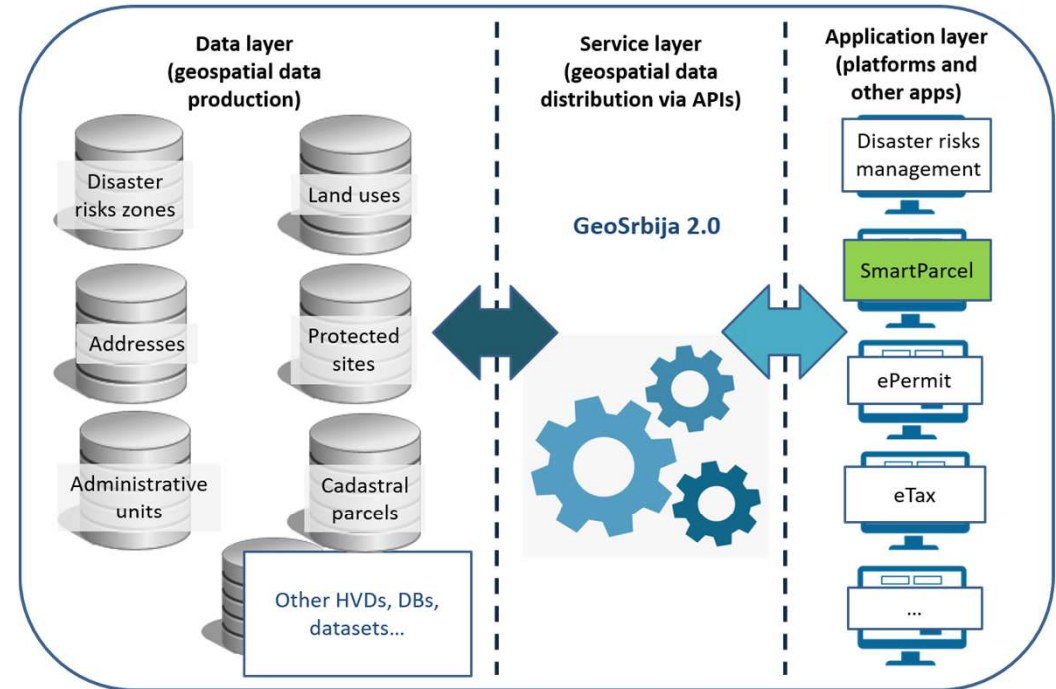
Component 2: Expected Project results (3)

■ SmartSDI platform

- Upgrading existing digital platform GeoSrbija 2.0
- New platform for sustainable land use domain in Serbia – **SmartParcel**

- *Outputs:* user-friendly platform with user-centric services, data sharing tools based on APIs, new collaboration services for stakeholders
- *Impacts:* increased understanding of geospatial information importance, greater usage of geospatial information
- *Effects:* insights/knowledge creation service(s), on-line instructions for geospatial data usage, etc.

SmartSDI platform

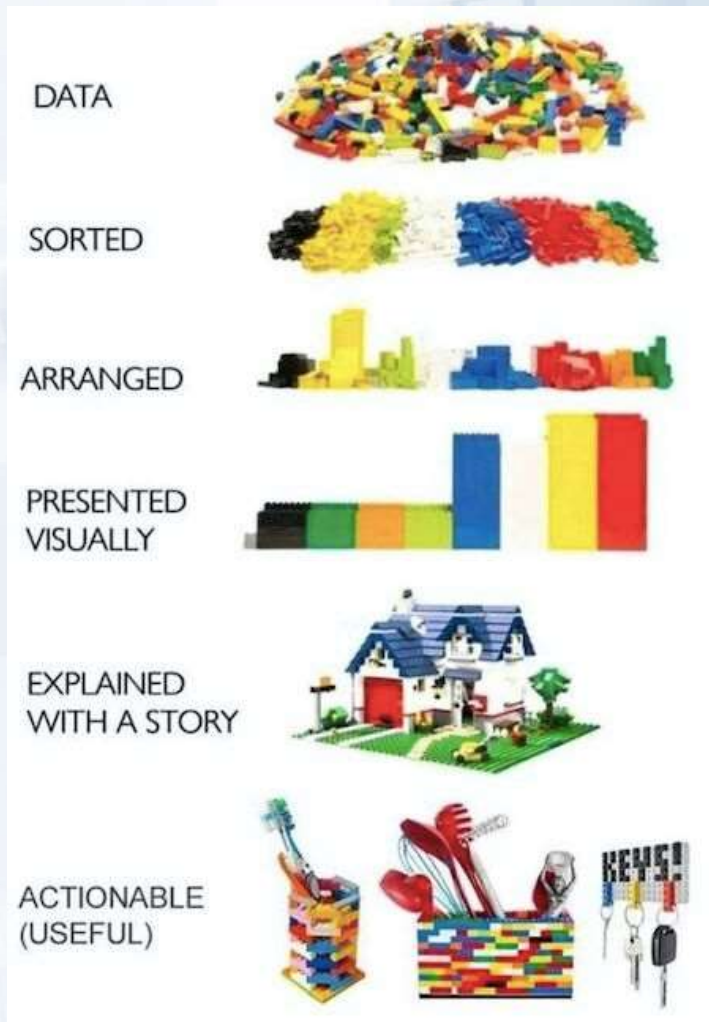


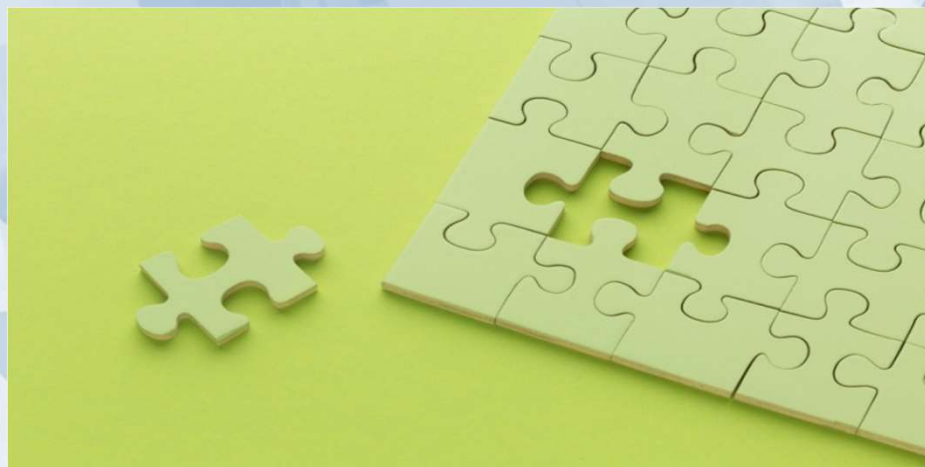
Kartdagarna 2024, Clarion Hotel Post, Gothenburg, Sweden, 18th April, 2024



Conclusion: Towards eSpace platform

- Project SmartSDI is just a first step towards eSpace platform establishment
 - Digital transformation of territorial planning and development process in Serbia
 - Capabilities for creating the new geospatial insights and contextual knowledge for the decision-making and policies management towards the green transition
 - Simple access and enhanced usage of the public sector geospatial datasets and related services on-demand and in accordance with the end-users need





Thank you for your attention!

rgz.gov.rs

Kartdagarna 2024, Clarion Hotel Post, Gothenburg, Sweden, 18th April, 2024